

Clamping and balancing technology

and
accessories



grinding deserves SOLUTIONS

GDS[®]
Made in Germany



CONTENT

Status Sept. 2021

Clamping and balancing technology

Optimal grinding solutions require extreme precision paired with an efficient and flexible loading system on your machine.

To meet these requirements, GDS has developed new clamping and balancing systems.

"Our quality for your success"

All clamping and balancing solutions needed for high-precision tool grinding from one source. Customized solutions for your grinding and workpiece spindles are available on request.

GDS - precision is our passion



Competence and Innovation

SHARK 5-Jaw Chuck	4-7
µGrind booster Series	8-17
VIPER Series	18-35
ALLIGATOR Series	36-47
COBRA Series	48-51
xGrind Series	52-59
Clamp Stick clamping tools.....	60-61
FIRETIGER tool pallets	62-63
Equi'Z balancing technology	64-67
Adapter for dressing, presetting	68
Adapter SK40 and SK50	69-70
Adapter grinding wheel adapter	71
Test and adjusting mandrels	72
Universal swing prism	73
GDS trading partners	74-77
Space for your notes	78-79

Characteristics of GDS clamping and balancing systems:



Highest accuracy by using modern measurement techniques.



Perfect fit and optimum radial and axial runout.



Ruggedness due to use of tempered material and best heating treatments.



Optimum surface finish plus long lasting dimensional stability and precision.



Sustainability by excellent durability and repair options.

SHARK - the 5-Jaw Chuck in high-precision GDS quality!



The modern grinding process is becoming increasingly complex: extreme accuracy, perfect quality and reduction of set-up times under enormous price pressure. To meet these requirements, GDS has developed the SHARK multi-range clamping system.

Specially designed for use in changing clamping ranges, it enables you to directly clamp your workpieces fully automatically, in the diameter range from 3 mm to 20 mm. You need neither collets nor intermediate sleeves and can also clamp special diameters and intermediate dimensions without further ado and with process reliability. Your set-up time is reduced to a minimum and you achieve a set-up cost saving of up to 70 % compared to regular clamping devices.

The SHARK is just as suitable for manufacturing new tools as it is for resharping.

SHARK - versatile, flexible and highly accurate.

Technical data:

number of slats	max. clamping depth (mm)	min. clamping depth (mm)	clamping range (mm)	clamping force max. (kN)	pressure (MPa)	weight (kg)	speed max. (1/min)	Ø outside (mm)	chuck length (mm)
5	100	2,5 x D	3-20 mm	9,6	min. 6 bar	6,7	1200	148	122,5



The **SHARK 5-Jaw Chuck** is designed exclusively for **automatic operation**.



Best results - even under the most difficult conditions



With the SHARK, the clamping jaws are in the same axial position at all times. Due to the uniquely newly developed solid jaw guide, the wobble can be reduced to a minimum. Together with the high concentricity and repeatability, as well as low interfering contours, you achieve process reliability and best results even with difficult processes. During operation, the chuck is cleaned with active sealing air. This prevents contamination and maintains absolute precision over the long term.

High compatibility with all common machine manufacturers

The SHARK multi-range clamping system is available for all common machine interfaces by means of an adapter flange. Our trained service personnel will be happy to help you determine the right version for your machine. Let us advise you and find the best solution for your work process.



Your flexible solution in the clamping range 3-20 mm.

Flexible clamping range Ø 3 mm - 20 mm

No auxiliary tools required

Highest precision ≤ 0.005 mm

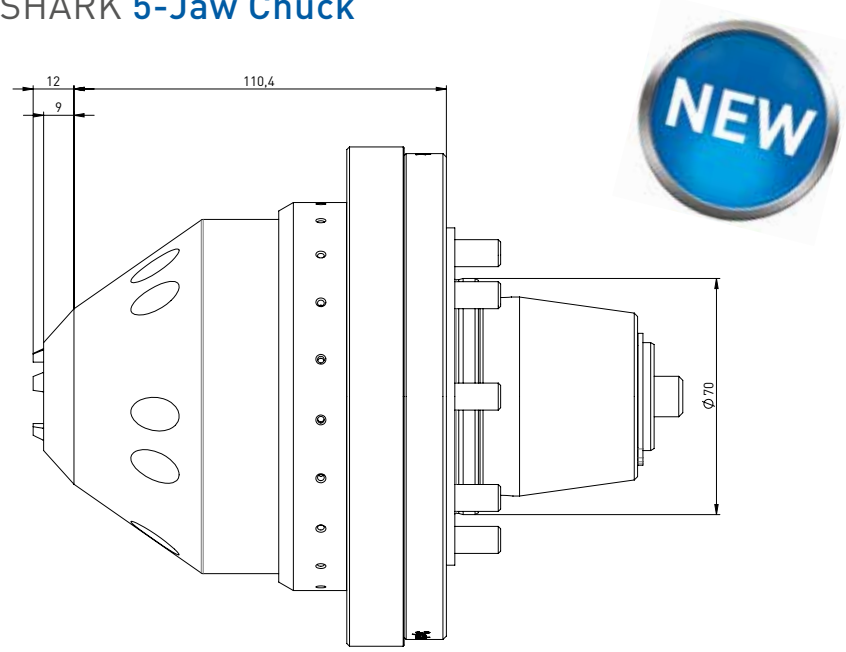
Concentricity can be precisely aligned

Cost reduction due to time savings



SHARK 5-Jaw Chuck

SHARK 5-Jaw Chuck



Delivery includes:
Case, SHARK 5-Jaw Chuck, tie rod, compression spring, adjusting mandrel D20d12, mounting screws, clamping wrench SW6x350, clamping wrench SW6x150 , taper D30x155 alignment hammer, double socket wrench SW24 x 27 with handle, test certificate

Item No.	Name
400008000	SHARK 5-Jaw Chuck Walter
400008001	SHARK 5-Jaw Chuck ANCA

The SHARK multi-range clamping system is only suitable for automatic operation!

Accessories:

Item No.	Name
250002915	Stop screw



High compatibility with all common machine manufacturers.

Available for following machines:
ANCA
Walter

Also available for these machines on request:
ISOG
JOERG S-techplus
Reinecker
Saacke
Schütte
Star
TGT
Vollmer



The μ Grind HPS 20 **automatic chuck** offers a 2-plane adjustment to eliminate axial and radial runout in just a few minutes.

Quick and easy alignment of axial runout and wobble adjustment – the μ Grind yields a **new dimension in grinding precision**.



GDS developed the μ Grind series specifically for use on tool grinding machines, which made this series an innovation in the field of high-precision clamping devices for tool grinding.

This series offers accurate concentricity and repeatability, with runout holding under two microns at 2.5 x D.

Excellent damping properties for uniform material removal while optimizing feed rates. The workpiece surface finish is perfectly consistent and grinding wheel wear is significantly reduced. This makes your grinding process highly productive and predictable.

Best dimensional stability at the cutting edge. Tapered profile for excellent wheel clearance. Setup with micron-level accuracy in just a few minutes by using two gauges, with absolute repeatability when changing blanks or collets (to change diameters).

GDS -precision is our passion



μ Grind booster
ANCA HPS 20L



μ Grind booster
HPS 20 L



μ Grind booster
ANCA HPS 20



μ Grind booster
HPS 20



μ Grind booster
HSK63



Tapered profile for optimal wheel clearance.

Accurate concentricity and repeatability. Runout under 0.002 mm at 2.5 x D.

Wobble adjustment.

Concentricity alignment.

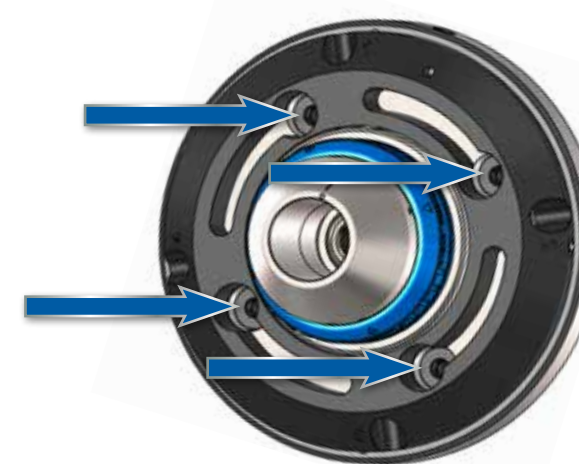
Wide clamping range due to special collets.

Requires a relatively short clamping length on the blank to achieve constant holding force and concentricity at 2.5 x D.

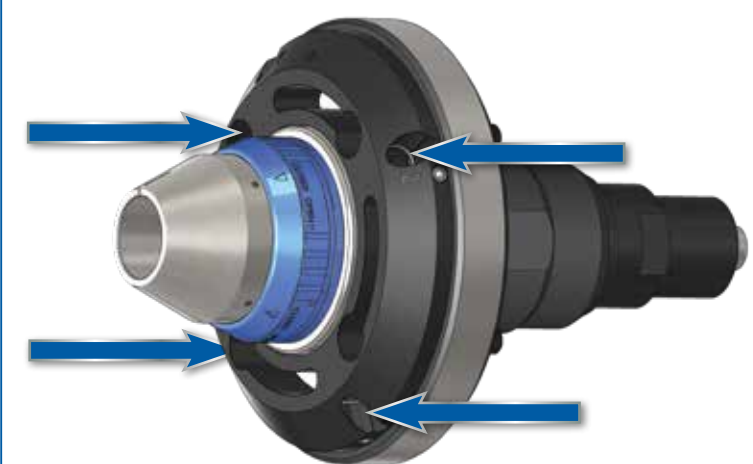
Excellent dampening properties with very low wearout.

Sustainable investment due to excellent durability and repair options.

Setup - **Concentric with the machine**



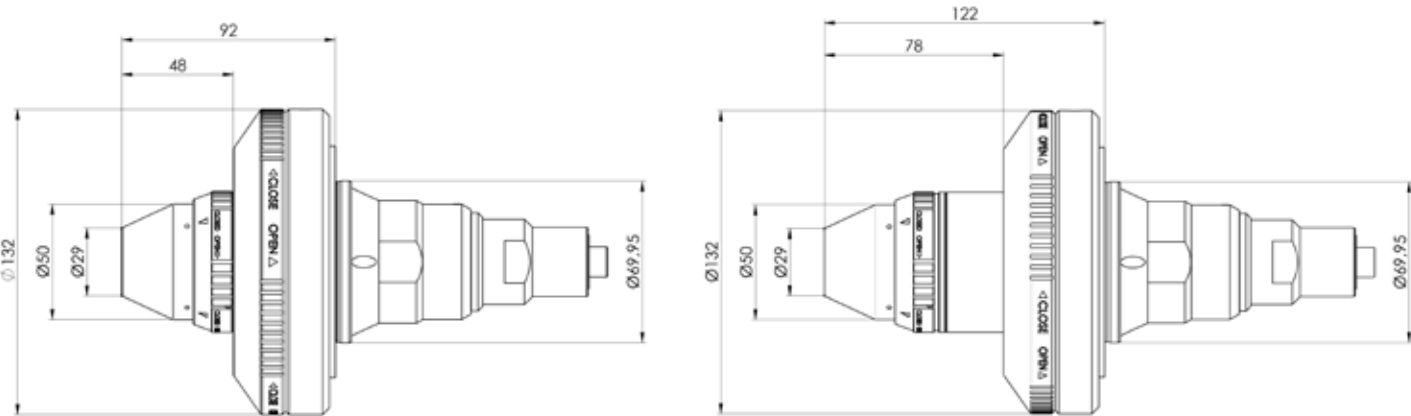
Setup - **Parallel with the machine**



μGrind booster HPS 20 / HPS 20 L



μGrind booster HPS 20 / HPS 20 L



Delivery includes:
Case, push rod, alignment hammer,
clamping wrench, double socket wrench

Item No.	Name	D	L
400001000	μGrind booster HPS 20	69,95	92
400001001	μGrind booster HPS 20 L	69,95	122

Available for following machine(s):



Helitronic Mini Power
(excluding Helitronic Mini Automation)
Helitronic Power
Helitronic Vision
Helitronic Essential
Measuring machines: Helicheck



HPS collets see on the following pages.

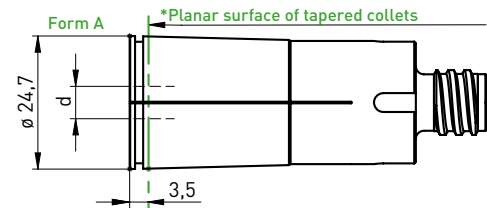
Item No.	Name
350270002	Alignment set HPS (excl. dial gauges) Incl. HPS collets ø8 and ø10, test pin ø8 and ø10 dial gauges available separately
350270003	Dial gauges (2 pcs.)



HPS collets for µGrind booster HPS 20 // HPS 20 L and xGrind

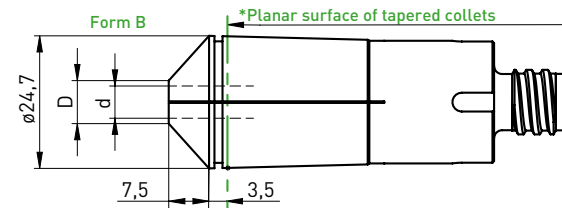


Accessories flat collets:

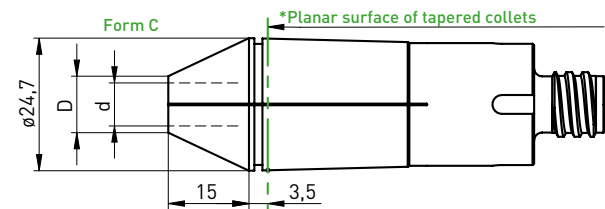


Item No.	Name - \varnothing d	Form
350260003	HPS collet 20 - \varnothing 3 mm	A
350260004	HPS collet 20 - \varnothing 4 mm	A
350260005	HPS collet 20 - \varnothing 5 mm	A
350260006	HPS collet 20 - \varnothing 6 mm	A
350260007	HPS collet 20 - \varnothing 7 mm	A
350260008	HPS collet 20 - \varnothing 8 mm	A
350260009	HPS collet 20 - \varnothing 9 mm	A
350260010	HPS collet 20 - \varnothing 10 mm	A
350260011	HPS collet 20 - \varnothing 11 mm	A
350260012	HPS collet 20 - \varnothing 12 mm	A
350260013	HPS collet 20 - \varnothing 13 mm	A
350260014	HPS collet 20 - \varnothing 14 mm	A
350260015	HPS collet 20 - \varnothing 15 mm	A
350260016	HPS collet 20 - \varnothing 16 mm	A
350260017	HPS collet 20 - \varnothing 17 mm	A
350260018	HPS collet 20 - \varnothing 18 mm	A
350260019	HPS collet 20 - \varnothing 19 mm	A
350260020	HPS collet 20 - \varnothing 20 mm	A
350260201	HPS collet 20 - \varnothing 1/8"	A
350260202	HPS collet 20 - \varnothing 3/16"	A
350260203	HPS collet 20 - \varnothing 1/4"	A
350260204	HPS collet 20 - \varnothing 5/16"	A
350260205	HPS collet 20 - \varnothing 3/8"	A
350260206	HPS collet 20 - \varnothing 7/16"	A
350260207	HPS collet 20 - \varnothing 1/2"	A
350260208	HPS collet 20 - \varnothing 9/16"	A
350260209	HPS collet 20 - \varnothing 5/8"	A
350260210	HPS collet 20 - \varnothing 11/16"	A
350260211	HPS collet 20 - \varnothing 3/4"	A

Accessories tapered collets:



Item No.	Name - \varnothing d	Form
350260130	HPS collet 20K - \varnothing 2,35 mm	B
350260103	HPS collet 20K - \varnothing 3 mm	B
350260104	HPS collet 20K - \varnothing 4 mm	B
350260105	HPS collet 20K - \varnothing 5 mm	B
350260106	HPS collet 20K - \varnothing 6 mm	B
350260301	HPS collet 20K - \varnothing 1/8"	B
350260302	HPS collet 20K - \varnothing 3/16"	B
350260303	HPS collet 20K - \varnothing 1/4"	B



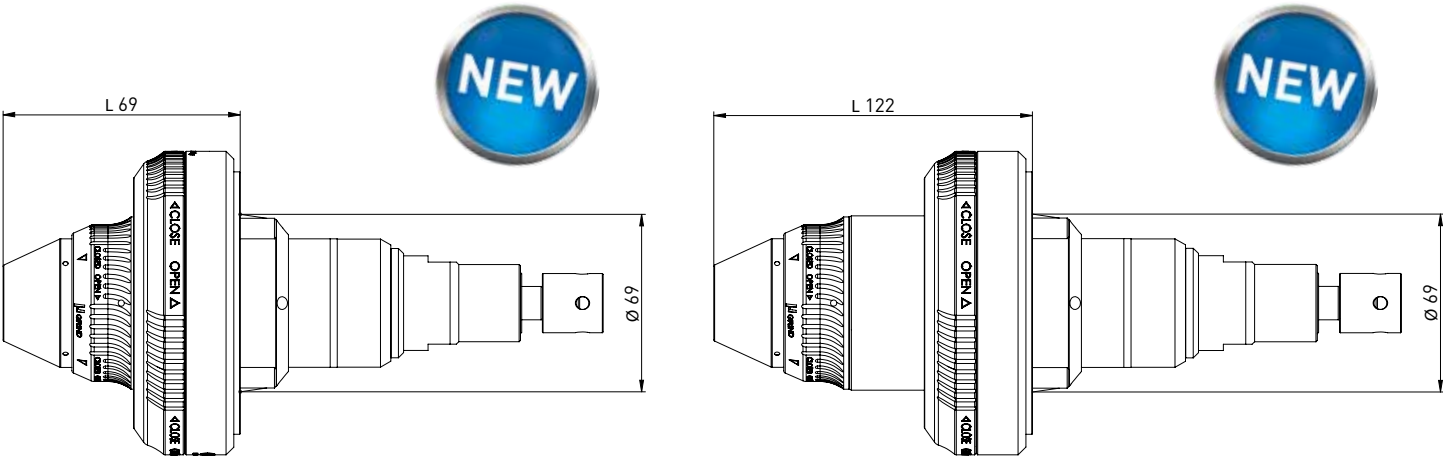
Item No.	Name - \varnothing d	Form
350260107	HPS collet 20K - \varnothing 7 mm	C
350260108	HPS collet 20K - \varnothing 8 mm	C
350260109	HPS collet 20K - \varnothing 9 mm	C
350260110	HPS collet 20K - \varnothing 10 mm	C
350260111	HPS collet 20K - \varnothing 11 mm	C
350260112	HPS collet 20K - \varnothing 12 mm	C
350260304	HPS collet 20K - \varnothing 5/16"	C
350260305	HPS collet 20K - \varnothing 3/8"	C
350260306	HPS collet 20K - \varnothing 7/16"	C
350260307	HPS collet 20K - \varnothing 1/2"	C



Minimum clamping depth of 2,5 x \varnothing from *clamping chuck's plane surface.

μGrind booster ANCA HPS 20 and HPS 20 L

μGrind booster ANCA HPS 20 and HPS 20 L



Delivery includes:
Case, push rod, alignment hammer D30x155,
clamping wrench SW 5.0x150

Available for following machine(s):

ANCA
CNC MACHINES
ANCA FX
ANCA MX
ANCA TX



HPS collets can be found on pages 12 and 13.

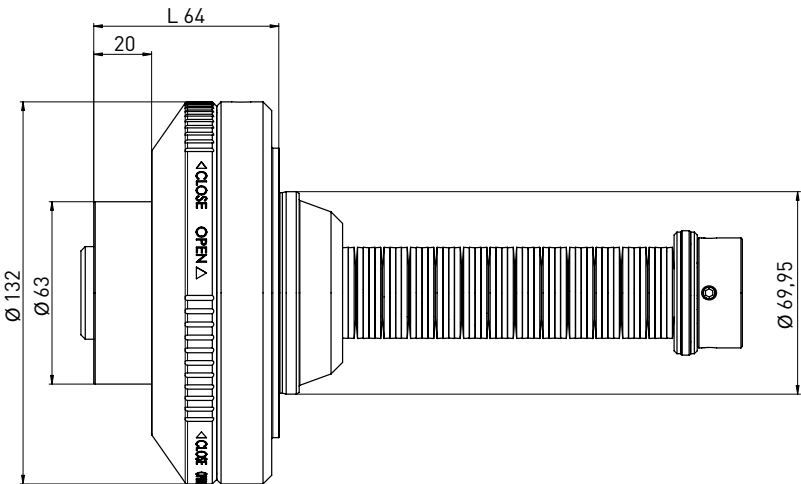
Item No.	Name
350270002	Alignment set HPS (excl. dial gauges) Incl. HPS collets ø8 and ø10, test pin ø8 and ø10 dial gauges available separately
350270003	Dial gauges (2 pcs.)



μGrind HSK63



μGrind HSK63



Delivery includes:
Case, actuating pushrod, adjustment hammer, wrench

Item No.	Name	D	L
400003000	μGrind HSK63	69,95	64

Available for following machine(s):

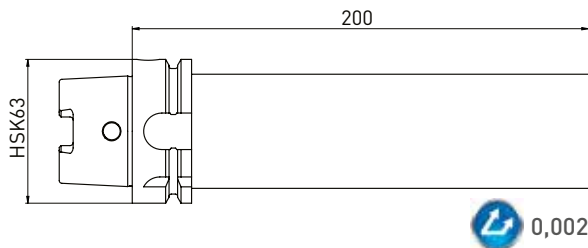


Helitronic Mini Power
(excluding Helitronic Mini Automation)
Helitronic Power
Helitronic Vision
Helitronic Essential
Measuring machines: Helicheck



Accessories:

Item No.	Name
350090050	Test mandrel HSK63 x ø50 x 200



Item No.	Name
350290001	Adapter flange ANCA with actuating pushrod



Available for following machine(s):
ANCA MX 5, ANCA MX 7

VIPER is **the powerhouse** of our GDS clamping series.
Precise, fast, versatile and strong – **perfectly equipped for all applications.**



VIPER technology has been developed particularly for use in high-performance grinding centers.

Intense holding forces offer a consistent grinding process. Its versatile applicability paired with high repeatability perfectly meets the requirements of economically optimized manufacturing or re-sharpening of rotationally symmetric tools. Set up on your tool grinding machine quickly, Viper technology is ready for use.

Combined with our CoFix wrench, you reduce set-up times to a minimum as you change your collets easier, quicker and safer as ever before.

VIPER technology – perfectly equipped for all applications.

GDS - precision is our passion

Intense holding forces, versatile applicability and high repeatability at minimal set-up times are basic requirements of economic and cost-efficient manufacturing.



Extreme holding forces.

Very sturdy.

High concentricity and repeatability.

Adjustable run-out.

Mutable clamping range by using standard Nann collets.

Extremely low wear.

Safe and easy collet change within seconds by using GDS' CoFix wrench.



GDS VIPER M
Nann 3409E Micro



GDS VIPER S
Nann 3148E Mini/G200



VIPER S
Nann 3148E



VIPER L
Nann 3718E



GDS VIPER S
Nann 3148E Micro



VIPER M
Nann 3409E



GDS VIPER M
Nann 3409E Mini/G200

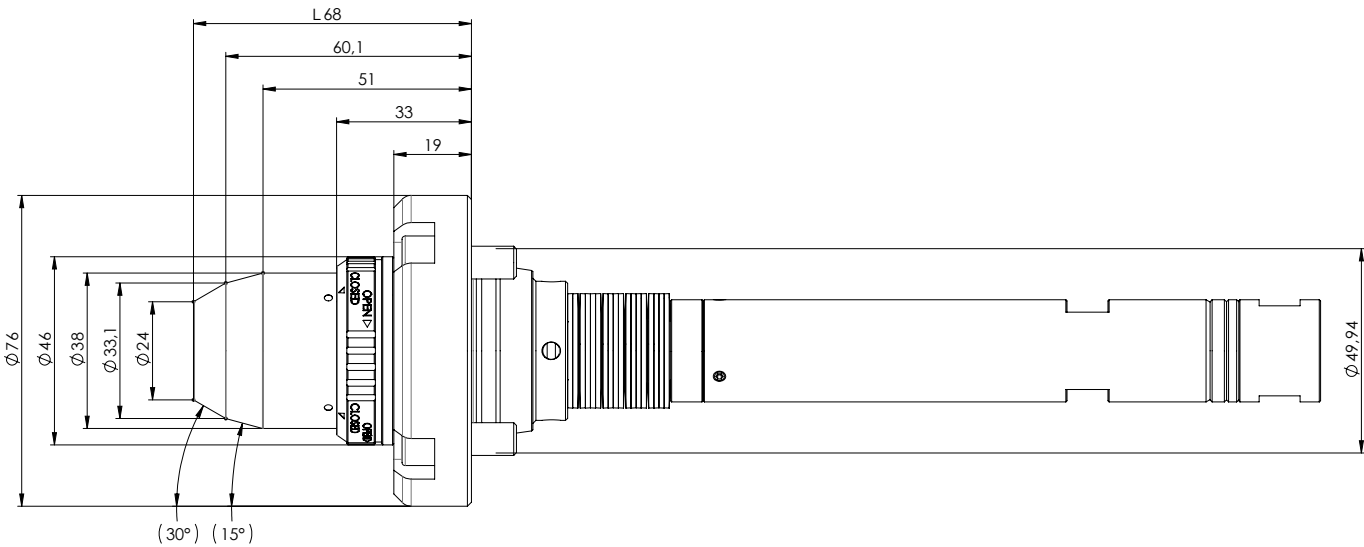


VIPER XL
Nann 3851E

VIPER S Nann 3148 E Mini/G200 **NANN**  Collet - maximum bore $\varnothing 10$



VIPER S Nann 3148 E Mini/G200 **NANN**  Collet - maximum bore $\varnothing 10$



Delivery includes:
actuating pushrod

Available for following machine(s):

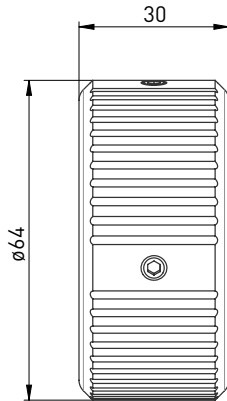


Helitronic Mini Automation

Item No.	Name	D	L
400004018	VIPER S Nann 3148E Mini/G200	49,95	68

Accessories:

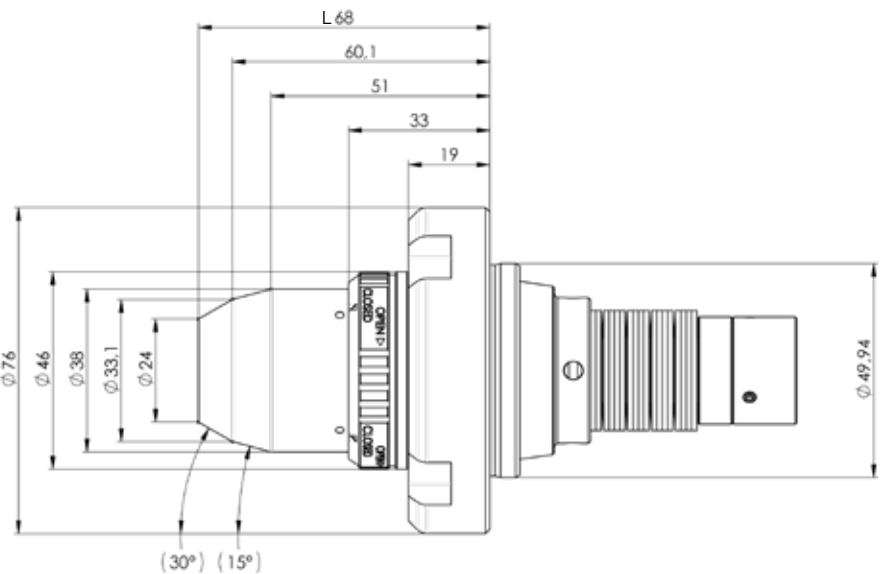
Item No.	Name
350060013	Cofix 12 (for W15 and Nann 3148E) Screw-in tool for collets



VIPER S Nann 3148E Micro **NANN** Collet - maximum bore $\varnothing 10$



VIPER S Nann 3148E Micro **NANN** Collet - maximum bore $\varnothing 10$



Delivery includes:
actuating pushrod

Available for following machine(s):

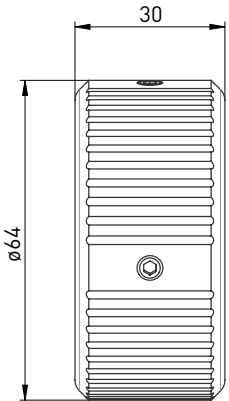


Helitronic Micro

Item No.	Name	D	L
400004019	VIPER S Nann 3148E Micro	49,95	68

Accessories:

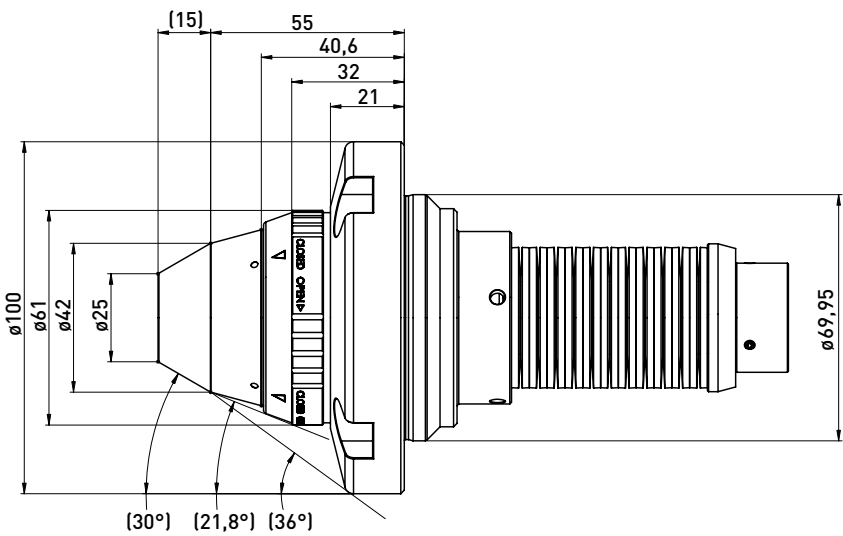
Item No.	Name
350060013	Cofix 12 (für W15 und Nann 3148E) Screw-in tool for clamping sleeves



VIPER S Nann 3148E **NANN** Collet - maximum bore $\varnothing 10$



VIPER S Nann 3148E **NANN** Collet - maximum bore $\varnothing 10$



Delivery includes:
actuating pushrod

Item No.	Name	D	L
400004014	VIPER S Nann 3148E	69,95	70

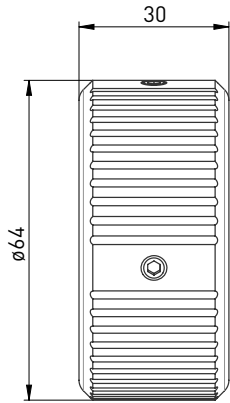
Available for following machine(s):



Helitronic Mini Power
([excluding Helitronic Mini Automation])
Helitronic Power
Helitronic Vision
Helitronic Essential
Essential Automation

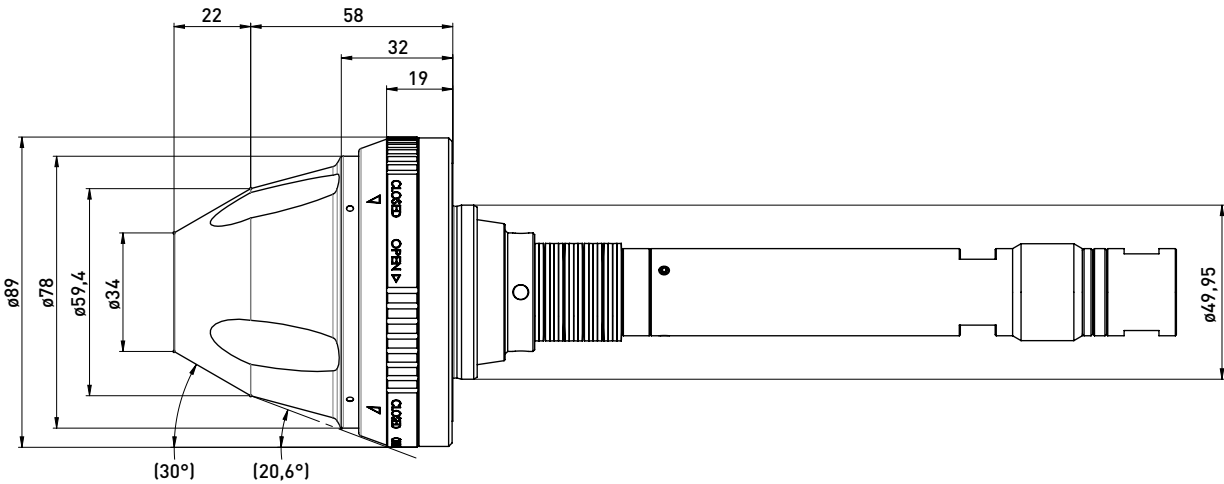
Accessories:

Item No.	Name
350060013	Cofix 12 [for W15 and Nann 3148E] Screw-in tool for clamping sleeves



VIPER M Nann 3409E Mini/G200 **NANN**  Collet - maximum bore $\varnothing 16$

VIPER M Nann 3409E Mini/G200 **NANN**  Collet - maximum bore $\varnothing 16$



Delivery includes:
actuating pushrod

Available for following machine(s):

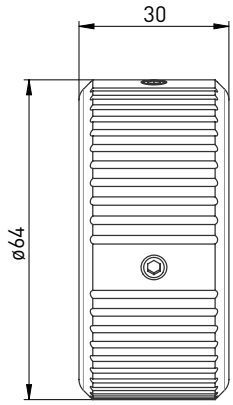


Helitronic Mini Automation

Item No.	Name	D	L
400004003	VIPER M Nann 3409E Mini/G200	49,95	80

Accessories:

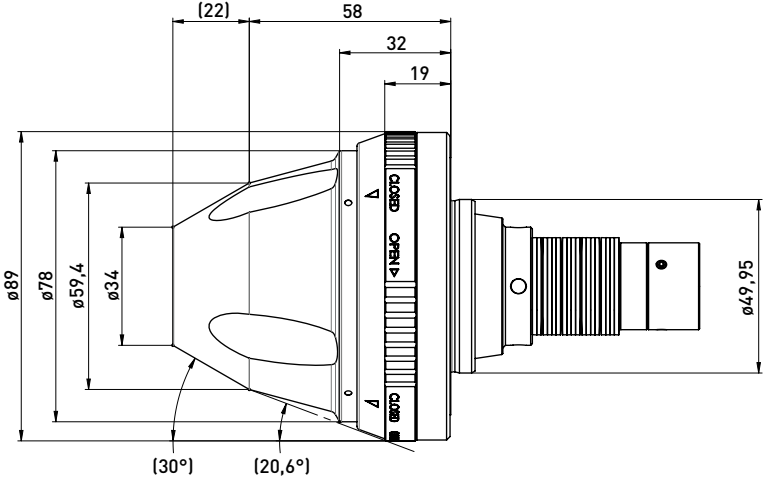
Item No.	Name
350060012	CoFix 20 (for W20 and Nann 3409E) Screw-in tool for clamping sleeves



VIPER M Nann 3409E Micro **NANN**  Collet - maximum bore $\varnothing 16$



VIPER M Nann 3409E Micro **NANN**  Collet - maximum bore $\varnothing 16$



Delivery includes:
actuating pushrod

Available for following machine(s):

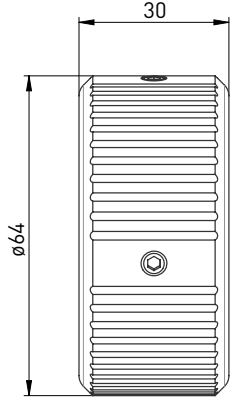


Helitronic Micro

Item No.	Name	D	L
400004002	VIPER M Nann 3409E Micro	49,95	80

Accessories:

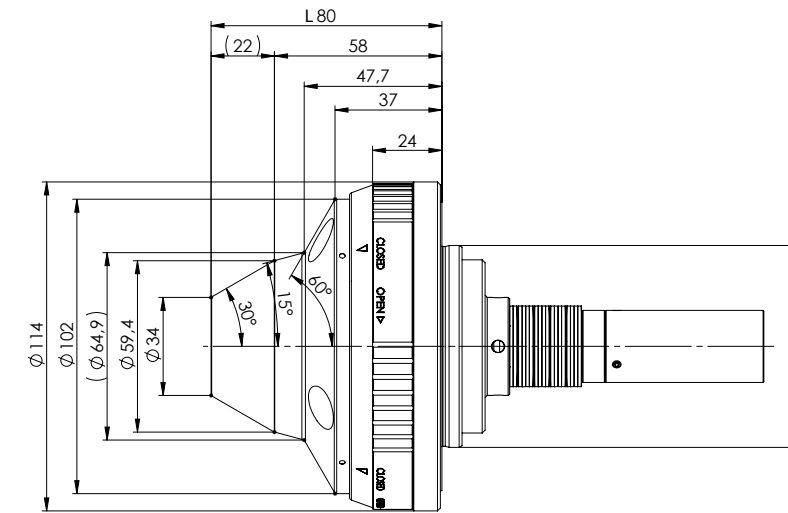
Item No.	Name
350060012	CoFix 20 (for W20 and Nann 3409E) Screw-in tool for clamping sleeves



VIPER M **Nann 3409E**   Collet - maximum bore $\varnothing 16$



VIPER M **Nann 3409E**   Collet - maximum bore $\varnothing 16$



Delivery includes:
actuating pushrod

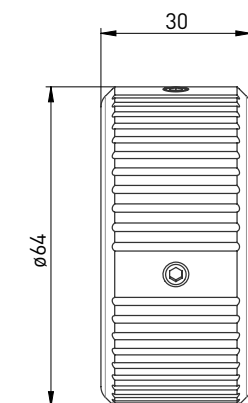
Available for following machine(s):



Helitronic Mini Power
 ((excluding Helitronic Mini Automation))
 Helitronic Power
 Helitronic Vision
 Helitronic Essential
 Essential Automation

Accessories:

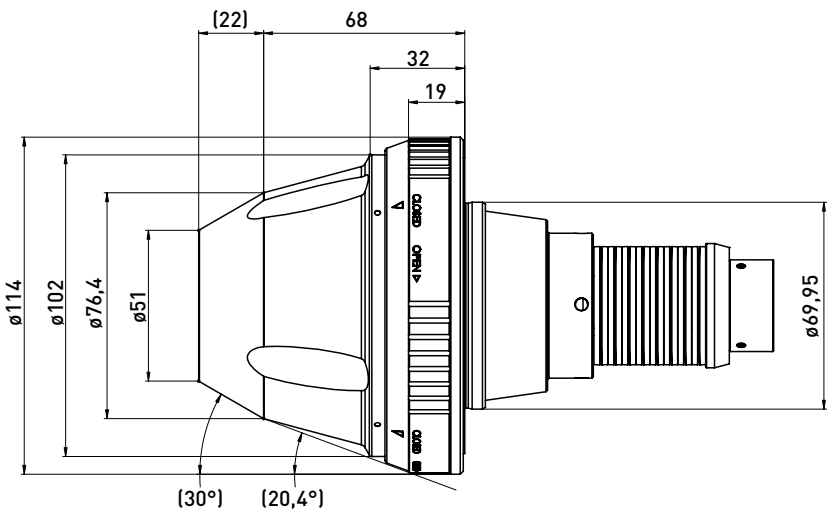
Item No.	Name
350060012	Cofix 20 (for W20 and Nann 3409E) Screw-in tool for clamping sleeves



VIPER L Nann 3718E **NANN**  Collet - maximum bore $\varnothing 27$



VIPER L Nann 3718E **NANN**  Collet - maximum bore $\varnothing 27$



Delivery includes:
actuating pushrod

Item No.	Name	D	L
400004012	VIPER L Nann 3718E	69,95	90

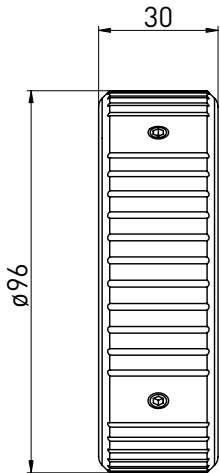
Available for following machine(s):



Helitronic Mini Power
([excluding Helitronic Mini Automation])
Helitronic Power
Helitronic Vision
Helitronic Essential

Accessories:

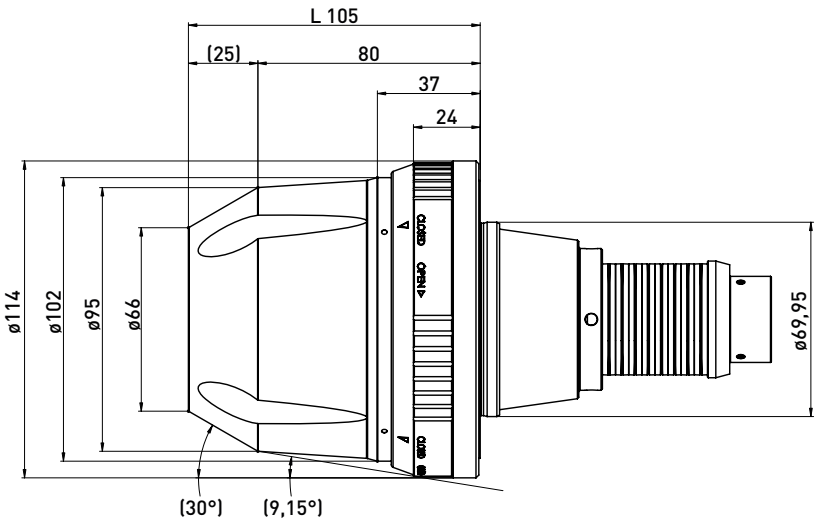
Item No.	Name
350060014	Cofix 32 (for Nann 3718E) Screw-in tool for clamping sleeves



VIPER XL Nann 3851E **NANN**  Collet - maximum bore $\varnothing 36$



VIPER XL Nann 3851E **NANN**  Collet - maximum bore $\varnothing 36$



Delivery includes:
actuating pushrod

Item No.	Name	D	L
400004013	VIPER XL Nann 3851E	69,95	105

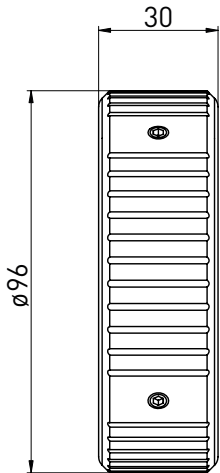
Available for following machine(s):



Helitronic Mini Power
([excluding Helitronic Mini Automation])
Helitronic Power
Helitronic Vision
Helitronic Essential

Accessories:

Item No.	Name
350060015	Cofix 45 [for Nann 3851E] Screw-in tool for clamping sleeves



ALLIGATOR - the fully automatic hydraulic expansion precision clamping system in best GDS quality!



The ALLIGATOR series was specially developed by GDS for use in tool grinding machines and is an innovation in the field of hydraulic expansion precision clamping devices for tool grinding machines.

The outstanding damping properties of the ALLIGATOR series, in combination with its precise concentricity and repeatability, enable the production of the best surfaces.

Best geometries, consistent quality, shape and dimensional accuracy on the tool cutting edge are the result with GDS clamping devices from the ALLIGATOR series.

Your **flexible** solution in the clamping range 3-20 mm.



Low interference contours for optimum grinding wheel run-out

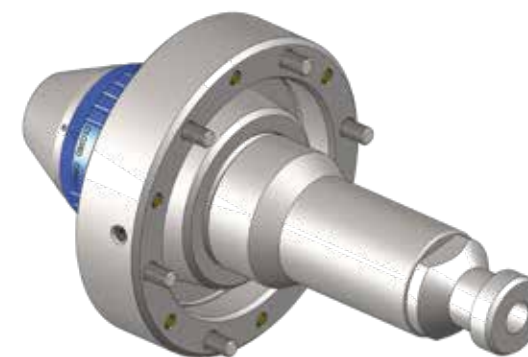
Flexible clamping range due to commercially available intermediate sleeves

Excellent concentricity and repeatability

Sustainable through inexpensive repairs and general overhauls

Automatic loading of the workpieces

Automatic bushing change possible



ALLIGATOR Reinecker



ALLIGATOR Saacke
Spindle with flat contact face



ALLIGATOR ANCA



ALLIGATOR Saacke
Spindle with union nut



ALLIGATOR ISOG

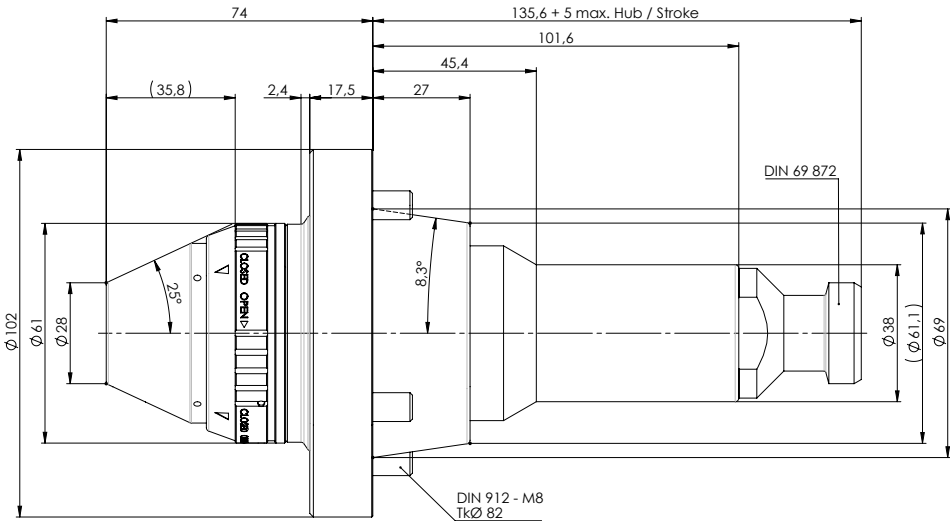


ALLIGATOR Walter

ALLIGATOR ANCA for a clamping range from 3 to 20 mm



ALLIGATOR ANCA for a clamping range from 3 to 20 mm



Intermediate sleeves with bayonet locking for automatic bushing exchange

Item No.	Name
400002002	ALLIGATOR ANCA

Accessories for ALLIGATOR:
Intermediate sleeves with radial locking

Item No.	Name	d
350111903	Intermediate sleeve RS ø20	3
350111904	Intermediate sleeve RS ø20	4
350111905	Intermediate sleeve RS ø20	5
350111906	Intermediate sleeve RS ø20	6
350111907	Intermediate sleeve RS ø20	7
350111908	Intermediate sleeve RS ø20	8
350111909	Intermediate sleeve RS ø20	9
350111910	Intermediate sleeve RS ø20	10
350111911	Intermediate sleeve RS ø20	11
350111912	Intermediate sleeve RS ø20	12
350111913	Intermediate sleeve RS ø20	13
350111914	Intermediate sleeve RS ø20	14
350111915	Intermediate sleeve RS ø20	15
350111916	Intermediate sleeve RS ø20	16

Item No.	Name	d
350112403	Intermediate sleeve BJ ø20 x 64	3
350112404	Intermediate sleeve BJ ø20 x 64	4
350112405	Intermediate sleeve BJ ø20 x 64	5
350112406	Intermediate sleeve BJ ø20 x 64	6
350112407	Intermediate sleeve BJ ø20 x 64	7
350112408	Intermediate sleeve BJ ø20 x 64	8
350112409	Intermediate sleeve BJ ø20 x 64	9
350112410	Intermediate sleeve BJ ø20 x 64	10
350112411	Intermediate sleeve BJ ø20 x 64	11
350112412	Intermediate sleeve BJ ø20 x 64	12
350112413	Intermediate sleeve BJ ø20 x 64	13
350112414	Intermediate sleeve BJ ø20 x 64	14
350112415	Intermediate sleeve BJ ø20 x 64	15
350112416	Intermediate sleeve BJ ø20 x 64	16
350112416	Intermediate sleeve BJ ø20 x 64	17

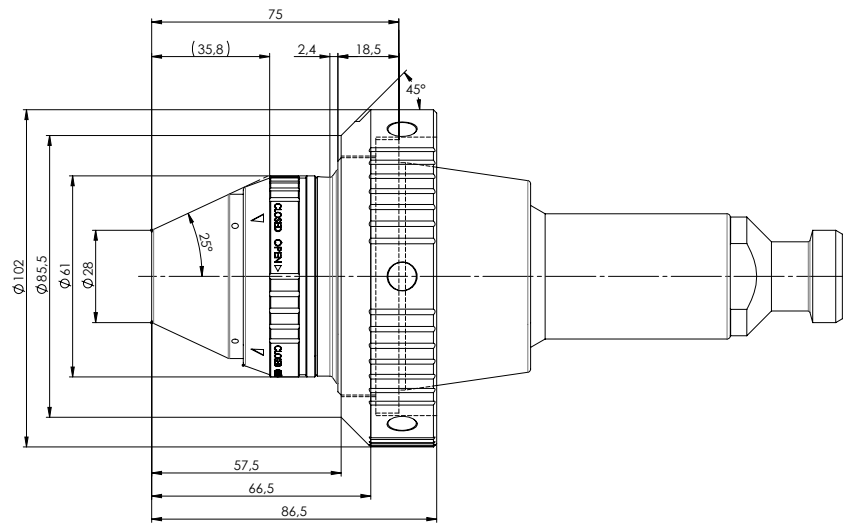
Accessories for intermediate sleeves with bayonet locking:

Best.-Nr.	Bezeichnung	d
250001590	Mounting wrench D20	
250001638	Bayonet insert	

ALLIGATOR ISOG for a clamping range from 3 to 20 mm



ALLIGATOR ISOG for a clamping range from 3 to 20 mm



Intermediate sleeves with bayonet locking for automatic bushing exchange

Item No.	Name
400002005	ALLIGATOR ISOG

Accessories for ALLIGATOR:
Intermediate sleeves with radial locking

Item No.	Name	d
350111903	Intermediate sleeve RS ø20	3
350111904	Intermediate sleeve RS ø20	4
350111905	Intermediate sleeve RS ø20	5
350111906	Intermediate sleeve RS ø20	6
350111907	Intermediate sleeve RS ø20	7
350111908	Intermediate sleeve RS ø20	8
350111909	Intermediate sleeve RS ø20	9
350111910	Intermediate sleeve RS ø20	10
350111911	Intermediate sleeve RS ø20	11
350111912	Intermediate sleeve RS ø20	12
350111913	Intermediate sleeve RS ø20	13
350111914	Intermediate sleeve RS ø20	14
350111915	Intermediate sleeve RS ø20	15
350111916	Intermediate sleeve RS ø20	16

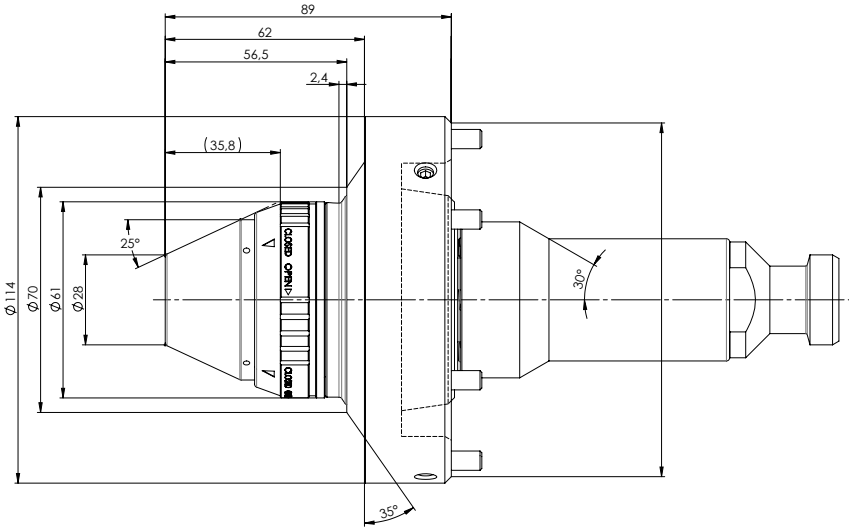
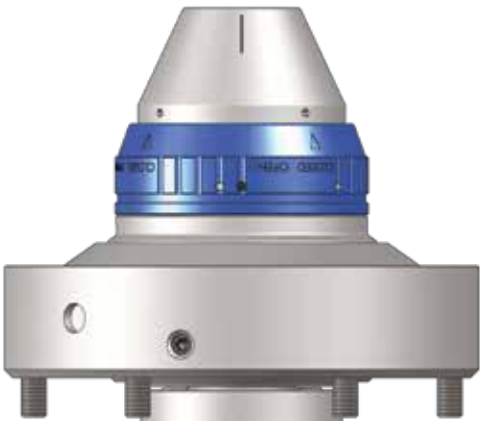
Item No.	Name	d
350112403	Intermediate sleeve BJ ø20 x 64	3
350112404	Intermediate sleeve BJ ø20 x 64	4
350112405	Intermediate sleeve BJ ø20 x 64	5
350112406	Intermediate sleeve BJ ø20 x 64	6
350112407	Intermediate sleeve BJ ø20 x 64	7
350112408	Intermediate sleeve BJ ø20 x 64	8
350112409	Intermediate sleeve BJ ø20 x 64	9
350112410	Intermediate sleeve BJ ø20 x 64	10
350112411	Intermediate sleeve BJ ø20 x 64	11
350112412	Intermediate sleeve BJ ø20 x 64	12
350112413	Intermediate sleeve BJ ø20 x 64	13
350112414	Intermediate sleeve BJ ø20 x 64	14
350112415	Intermediate sleeve BJ ø20 x 64	15
350112416	Intermediate sleeve BJ ø20 x 64	16
350112416	Intermediate sleeve BJ ø20 x 64	17

Accessories for intermediate sleeves with bayonet locking:

Best.-Nr.	Bezeichnung	d
250001590	Mounting wrench D20	
250001638	Bayonet insert	

ALLIGATOR Reinecker for a clamping range from 3 to 20 mm

ALLIGATOR Reinecker for a clamping range from 3 to 20 mm



Intermediate sleeves with bayonet locking for automatic bushing exchange

Item No.	Name
400002006	ALLIGATOR Reinecker

Accessories for ALLIGATOR:
Intermediate sleeves with radial locking

Item No.	Name	d
350111903	Intermediate sleeve RS ø20	3
350111904	Intermediate sleeve RS ø20	4
350111905	Intermediate sleeve RS ø20	5
350111906	Intermediate sleeve RS ø20	6
350111907	Intermediate sleeve RS ø20	7
350111908	Intermediate sleeve RS ø20	8
350111909	Intermediate sleeve RS ø20	9
350111910	Intermediate sleeve RS ø20	10
350111911	Intermediate sleeve RS ø20	11
350111912	Intermediate sleeve RS ø20	12
350111913	Intermediate sleeve RS ø20	13
350111914	Intermediate sleeve RS ø20	14
350111915	Intermediate sleeve RS ø20	15
350111916	Intermediate sleeve RS ø20	16

Item No.	Name	d
350112403	Intermediate sleeve BJ ø20 x 64	3
350112404	Intermediate sleeve BJ ø20 x 64	4
350112405	Intermediate sleeve BJ ø20 x 64	5
350112406	Intermediate sleeve BJ ø20 x 64	6
350112407	Intermediate sleeve BJ ø20 x 64	7
350112408	Intermediate sleeve BJ ø20 x 64	8
350112409	Intermediate sleeve BJ ø20 x 64	9
350112410	Intermediate sleeve BJ ø20 x 64	10
350112411	Intermediate sleeve BJ ø20 x 64	11
350112412	Intermediate sleeve BJ ø20 x 64	12
350112413	Intermediate sleeve BJ ø20 x 64	13
350112414	Intermediate sleeve BJ ø20 x 64	14
350112415	Intermediate sleeve BJ ø20 x 64	15
350112416	Intermediate sleeve BJ ø20 x 64	16
350112416	Intermediate sleeve BJ ø20 x 64	17

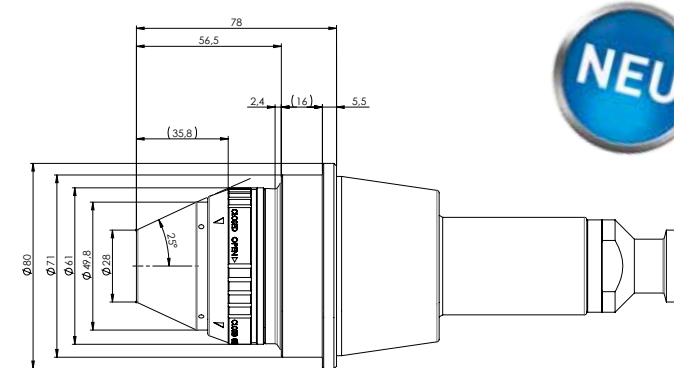
Accessories for intermediate sleeves with bayonet locking:

Best.-Nr.	Bezeichnung	d
250001590	Mounting wrench D20	
250001638	Bayonet insert	

ALLIGATOR **Saacke** for a clamping range from 3 to 20 mm



ALLIGATOR **Saacke**
Spindle with union nut



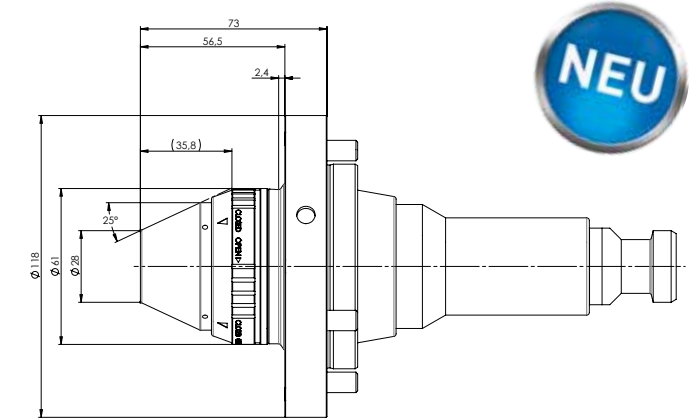
Item No.	Name	D	L
400002003	ALLIGATOR Saacke Spindle with union nut		
400002004	ALLIGATOR Saacke Spindle with flat contact face		

Accessories for ALLIGATOR:

Intermediate sleeves with radial locking

Item No.	Name	d
350111903	Intermediate sleeve RS ø20	3
350111904	Intermediate sleeve RS ø20	4
350111905	Intermediate sleeve RS ø20	5
350111906	Intermediate sleeve RS ø20	6
350111907	Intermediate sleeve RS ø20	7
350111908	Intermediate sleeve RS ø20	8
350111909	Intermediate sleeve RS ø20	9
350111910	Intermediate sleeve RS ø20	10
350111911	Intermediate sleeve RS ø20	11
350111912	Intermediate sleeve RS ø20	12
350111913	Intermediate sleeve RS ø20	13
350111914	Intermediate sleeve RS ø20	14
350111915	Intermediate sleeve RS ø20	15
350111916	Intermediate sleeve RS ø20	16

ALLIGATOR **Saacke**
Spindle with flat contact face



Intermediate sleeves with bayonet locking for automatic bushing exchange

Item No.	Name	d
350112403	Intermediate sleeve BJ $\varnothing 20 \times 64$	3
350112404	Intermediate sleeve BJ $\varnothing 20 \times 64$	4
350112405	Intermediate sleeve BJ $\varnothing 20 \times 64$	5
350112406	Intermediate sleeve BJ $\varnothing 20 \times 64$	6
350112407	Intermediate sleeve BJ $\varnothing 20 \times 64$	7
350112408	Intermediate sleeve BJ $\varnothing 20 \times 64$	8
350112409	Intermediate sleeve BJ $\varnothing 20 \times 64$	9
350112410	Intermediate sleeve BJ $\varnothing 20 \times 64$	10
350112411	Intermediate sleeve BJ $\varnothing 20 \times 64$	11
350112412	Intermediate sleeve BJ $\varnothing 20 \times 64$	12
350112413	Intermediate sleeve BJ $\varnothing 20 \times 64$	13
350112414	Intermediate sleeve BJ $\varnothing 20 \times 64$	14
350112415	Intermediate sleeve BJ $\varnothing 20 \times 64$	15
350112416	Intermediate sleeve BJ $\varnothing 20 \times 64$	16
350112416	Intermediate sleeve BJ $\varnothing 20 \times 64$	17

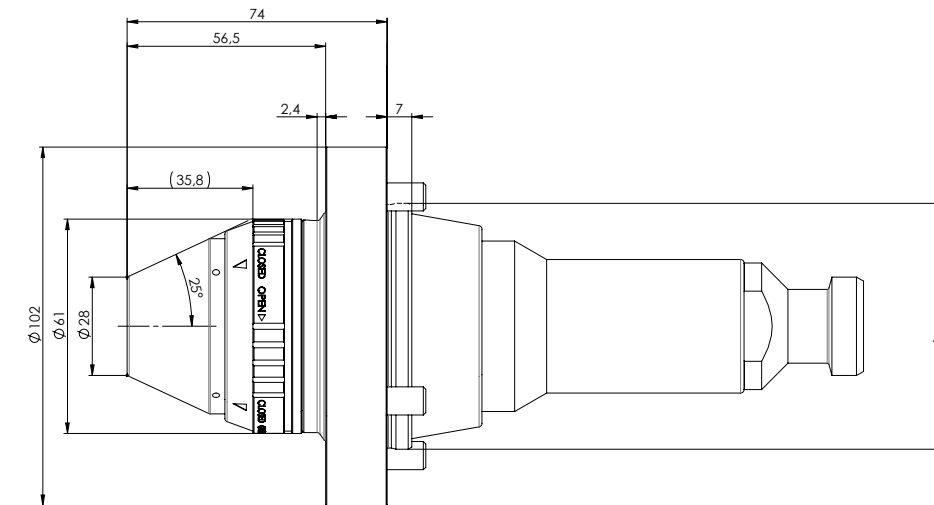
Accessories for intermediate sleeves with bayonet locking:

Best.-Nr.	Bezeichnung	d
250001590	Mounting wrench D20	
250001638	Bayonet insert	

ALLIGATOR **Walter** for a clamping range from 3 to 20 mm



ALLIGATOR **Walter** for a clamping range from 3 to 20 mm



Intermediate sleeves with bayonet locking for automatic bushing exchange

Item No.	Name
400002001	ALLIGATOR Walter

Accessories for ALLIGATOR:

Intermediate sleeves with radial locking

Item No.	Name	d
350111903	Intermediate sleeve RS ø20	3
350111904	Intermediate sleeve RS ø20	4
350111905	Intermediate sleeve RS ø20	5
350111906	Intermediate sleeve RS ø20	6
350111907	Intermediate sleeve RS ø20	7
350111908	Intermediate sleeve RS ø20	8
350111909	Intermediate sleeve RS ø20	9
350111910	Intermediate sleeve RS ø20	10
350111911	Intermediate sleeve RS ø20	11
350111912	Intermediate sleeve RS ø20	12
350111913	Intermediate sleeve RS ø20	13
350111914	Intermediate sleeve RS ø20	14
350111915	Intermediate sleeve RS ø20	15
350111916	Intermediate sleeve RS ø20	16

Item No.	Name	d
350112403	Intermediate sleeve BJ $\varnothing 20 \times 64$	3
350112404	Intermediate sleeve BJ $\varnothing 20 \times 64$	4
350112405	Intermediate sleeve BJ $\varnothing 20 \times 64$	5
350112406	Intermediate sleeve BJ $\varnothing 20 \times 64$	6
350112407	Intermediate sleeve BJ $\varnothing 20 \times 64$	7
350112408	Intermediate sleeve BJ $\varnothing 20 \times 64$	8
350112409	Intermediate sleeve BJ $\varnothing 20 \times 64$	9
350112410	Intermediate sleeve BJ $\varnothing 20 \times 64$	10
350112411	Intermediate sleeve BJ $\varnothing 20 \times 64$	11
350112412	Intermediate sleeve BJ $\varnothing 20 \times 64$	12
350112413	Intermediate sleeve BJ $\varnothing 20 \times 64$	13
350112414	Intermediate sleeve BJ $\varnothing 20 \times 64$	14
350112415	Intermediate sleeve BJ $\varnothing 20 \times 64$	15
350112416	Intermediate sleeve BJ $\varnothing 20 \times 64$	16
350112416	Intermediate sleeve BJ $\varnothing 20 \times 64$	17

Accessories for intermediate sleeves with bayonet locking:

Best.-Nr.	Bezeichnung	d
250001590	Mounting wrench D20	
250001638	Bayonet insert	

COBRA: The two-part clamping system in high-precision GDS quality!



Modern grinding processes become more and more complex, forcing you to achieve extreme precision and perfect quality while minimizing setup and tool-changing times, due to pricing pressure.

COBRA, the two-part clamping system, has been especially developed for high-performance grinding centers.

Excellent repeatability when changing blanks or collets is a key factor for optimal grinding results. Collets can be changed quickly and in just a few simple steps. You can also adjust radial concentricity in just a few minutes.

COBRA - the economical clamping system from GDS.

GDS - precision is our passion

An excellent solution at an affordable price.




Tapered profile for optimal wheel clearance.

Good concentricity and repeatability.

Adjustable radial concentricity.

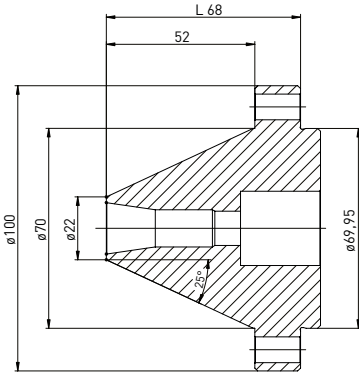
Handles a range of diameters using widely available Nann and Schaublin collets.

Very durable.

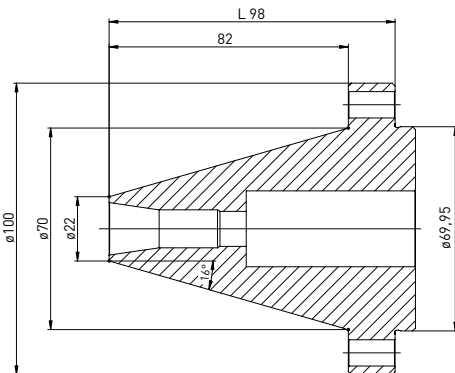
For **NANN**  **collets**. Can be used for Walter machines.



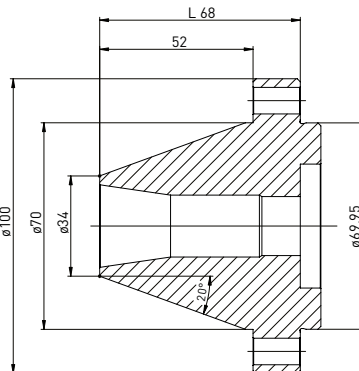
Item No.	Name
400007010	Collet chuck SK50 3148E L68
350300010	Pull rod for Collet chuck



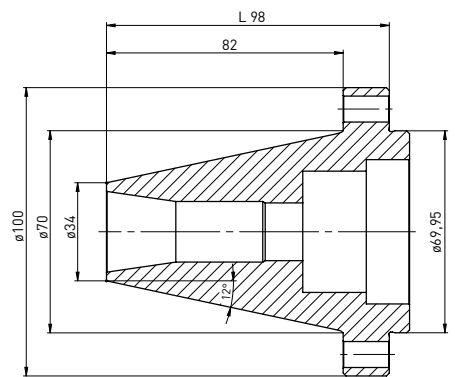
Item No.	Name
400007020	Collet chuck SK50 3148E L98
350300020	Pull rod for Collet chuck



Item No.	Name
400007030	Collet chuck SK50 3409E L68
350300030	Pull rod for Collet chuck



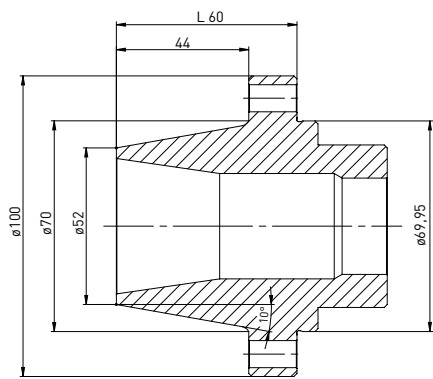
Item No.	Name
400007040	Collet chuck SK50 3409E L98
350300040	Pull rod for Collet chuck



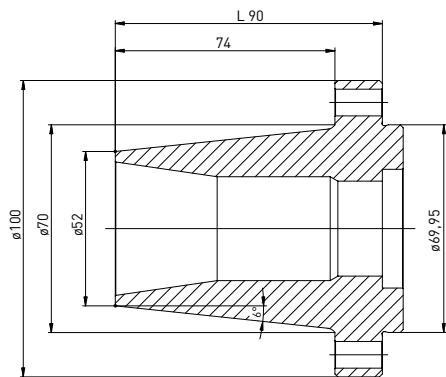
For **NANN** collets. Can be used for Walter machines.



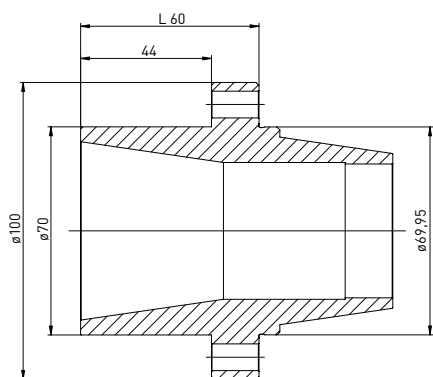
Item No.	Name
400007050	Collet chuck SK50 3718E L60
350300050	Pull rod for Collet chuck



Item No.	Name
400007060	Collet chuck SK50 3718E L90
350300060	Pull rod for Collet chuck



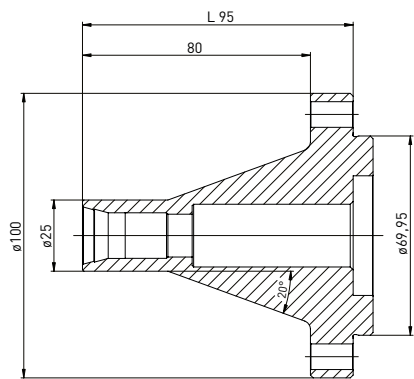
Item No.	Name
400007070	Collet chuck SK50 3851E L60
350300070	Pull rod for Collet chuck



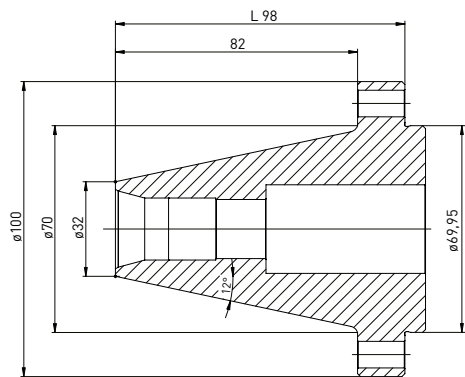
For Schaublin **collets**. Can be used for Walter machines.



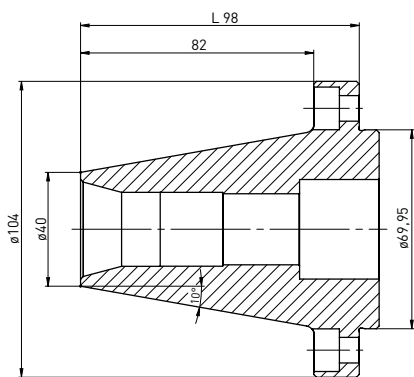
Item No.	Name
400007110	Collet chuck SK50 W15 L95
350300110	Pull rod for Collet chuck



Item No.	Name
400007120	Collet chuck SK50 W20 L98
350300120	Pull rod for Collet chuck

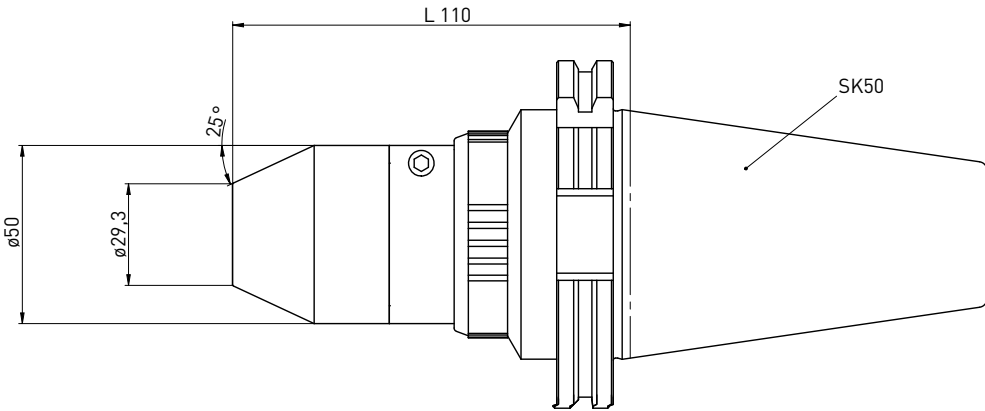


Item No.	Name
400007130	Collet chuck SK50 W25 L98
350300130	Pull rod for Collet chuck



The xGrind HPS 20 manual chuck is the **high-precision chuck** of our xGrind series.

xGrind **HPS 20 SK50**



Delivery includes:
wrench

Item No.	Name	d	L
400005000	xGrind HPS SK50	29,3	110
400005100	xGrind HPS SK50 complete set (incl. collets ø3-20mm)	29,3	110

HPS collets see on the following pages.

Item No.	Name
350270002	Alignment set HPS (excl. dial gauges) Incl. HPS collets ø8 and ø10, test pin ø8 and ø10 dial gauges available separately
350270003	Dial gauges (2 pcs.)



Accessories:

Item No.	Name
350270004	Torque screwdriver xGrind HPS



GDS developed the innovative xGrind series for precision clamping on tool grinding machines.

Due to the excellent dampening properties of our xGrind HPS 20, vibrations during the grind are attenuated.

Workpiece surface quality is absolutely consistent and ensures that you can meet tight manufacturing tolerances. Abrasion and wear of your grinding wheel is reduced.

The xGrind HPS also provides consistent clamping force and accurate concentricity even with a relatively short clamping length of 2.5 x D.

The xGrind HPS 20 creates perfect conditions for a predictable and stable grinding operation.

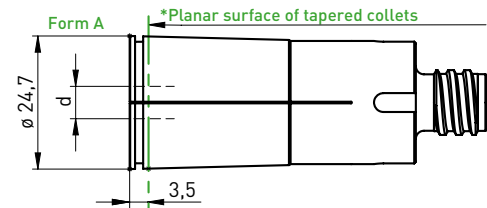
GDS -precision is our passion

- High concentricity and repeatability.
- Very economical due to excellent durability.
- Slim profile for optimal wheel clearance.
- Wide clamping range for outstanding versatility.
- Easy handling saves time – 45% less than conventional clamping techniques.
- Our collet wrench ensures safe operation.
- Very low long-term operating cost due to excellent durability and affordable overhaul and repair options.

HPS collets for xGrind and µGrind booster HPS 20 // HPS 20 L

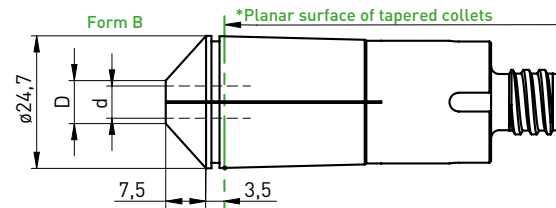


Accessories flat collets:

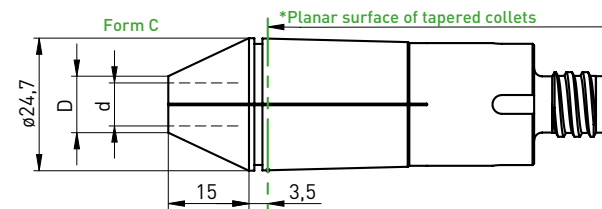


Item No.	Name - \varnothing d	Form
350260003	HPS collet 20 - \varnothing 3 mm	A
350260004	HPS collet 20 - \varnothing 4 mm	A
350260005	HPS collet 20 - \varnothing 5 mm	A
350260006	HPS collet 20 - \varnothing 6 mm	A
350260007	HPS collet 20 - \varnothing 7 mm	A
350260008	HPS collet 20 - \varnothing 8 mm	A
350260009	HPS collet 20 - \varnothing 9 mm	A
350260010	HPS collet 20 - \varnothing 10 mm	A
350260011	HPS collet 20 - \varnothing 11 mm	A
350260012	HPS collet 20 - \varnothing 12 mm	A
350260013	HPS collet 20 - \varnothing 13 mm	A
350260014	HPS collet 20 - \varnothing 14 mm	A
350260015	HPS collet 20 - \varnothing 15 mm	A
350260016	HPS collet 20 - \varnothing 16 mm	A
350260017	HPS collet 20 - \varnothing 17 mm	A
350260018	HPS collet 20 - \varnothing 18 mm	A
350260019	HPS collet 20 - \varnothing 19 mm	A
350260020	HPS collet 20 - \varnothing 20 mm	A
350260201	HPS collet 20 - \varnothing 1/8"	A
350260202	HPS collet 20 - \varnothing 3/16"	A
350260203	HPS collet 20 - \varnothing 1/4"	A
350260204	HPS collet 20 - \varnothing 5/16"	A
350260205	HPS collet 20 - \varnothing 3/8"	A
350260206	HPS collet 20 - \varnothing 7/16"	A
350260207	HPS collet 20 - \varnothing 1/2"	A
350260208	HPS collet 20 - \varnothing 9/16"	A
350260209	HPS collet 20 - \varnothing 5/8"	A
350260210	HPS collet 20 - \varnothing 11/16"	A
350260211	HPS collet 20 - \varnothing 3/4"	A

Accessories tapered collets:



Item No.	Name - \varnothing d	Form
350260130	HPS collet 20K - \varnothing 2,35 mm	B
350260103	HPS collet 20K - \varnothing 3 mm	B
350260104	HPS collet 20K - \varnothing 4 mm	B
350260105	HPS collet 20K - \varnothing 5 mm	B
350260106	HPS collet 20K - \varnothing 6 mm	B
350260301	HPS collet 20K - \varnothing 1/8"	B
350260302	HPS collet 20K - \varnothing 3/16"	B
350260303	HPS collet 20K - \varnothing 1/4"	B



Item No.	Name - \varnothing d	Form
350260107	HPS collet 20K - \varnothing 7 mm	C
350260108	HPS collet 20K - \varnothing 8 mm	C
350260109	HPS collet 20K - \varnothing 9 mm	C
350260110	HPS collet 20K - \varnothing 10 mm	C
350260111	HPS collet 20K - \varnothing 11 mm	C
350260112	HPS collet 20K - \varnothing 12 mm	C
350260304	HPS collet 20K - \varnothing 5/16"	C
350260305	HPS collet 20K - \varnothing 3/8"	C
350260306	HPS collet 20K - \varnothing 7/16"	C
350260307	HPS collet 20K - \varnothing 1/2"	C



Minimum clamping depth of 2,5 x \varnothing from *clamping chuck's plane surface.

The xGrind Hydro is our **hydraulic chuck with SK taper**.



The xGrind series was developed by GDS especially for use in all high-performance grinding centers with the SK50 interface.

GDS' xGrind Hydro is a new manual hydraulic chuck available in three diameter variations (12, 20 & 32 mm). Our goal was to develop a chuck that yields the highest speed, accuracy, and flexibility.

Outstanding repeatability combined with excellent damping properties of hydraulic clamping technology offers you best surfaces for optimum concentricity.

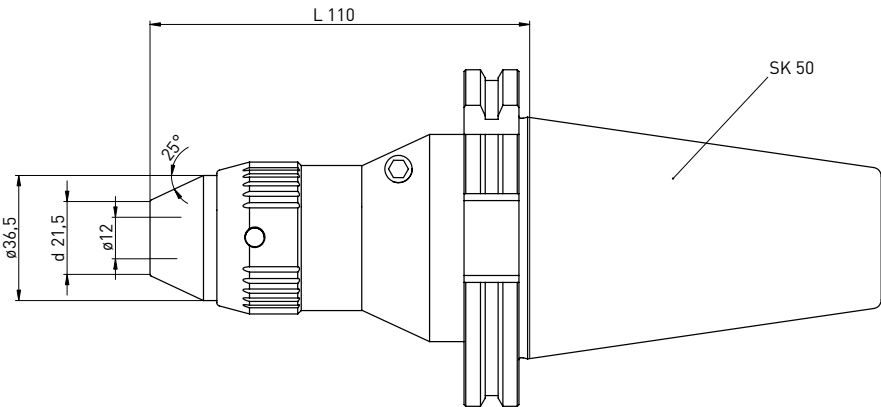
With the SK50 interface, the xGrind is nearly universally applicable.

GDS - precision is our passion



- NEW: SafeGrip**
Easy and safe removal of the chuck from your machine. SafeGrip prevents injuries and slipping off in daily handling.
- Slim profile for optimal grinding wheel clearance**
- Excellent concentricity and repeatability.**
- Wide clamping range by the use of GDS intermediate sleeves.**
- Reduced risk of injury by optimized angle of tensioning screw.**
- Economical repair and overhaul options.**

xGrind **Hydro SK50 ø12**

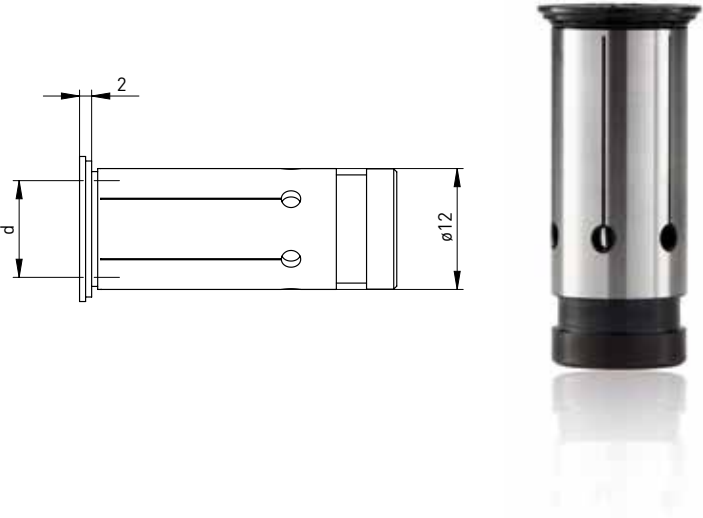


Delivery includes:
wrench

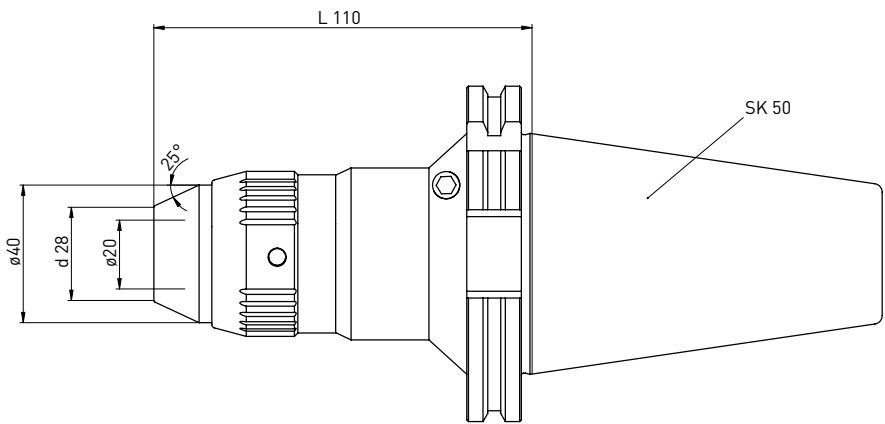
Item No.	Name	d	L
400005001	xGrind Hydro SK50 ø12	21,5	110

Accessories:

Item No.	Name	d
350110601	GDS intermediate sleeve ø12	3
350110602	GDS intermediate sleeve ø12	4
350110603	GDS intermediate sleeve ø12	5
350110604	GDS intermediate sleeve ø12	6
350110605	GDS intermediate sleeve ø12	8



xGrind Hydro SK50 ø20

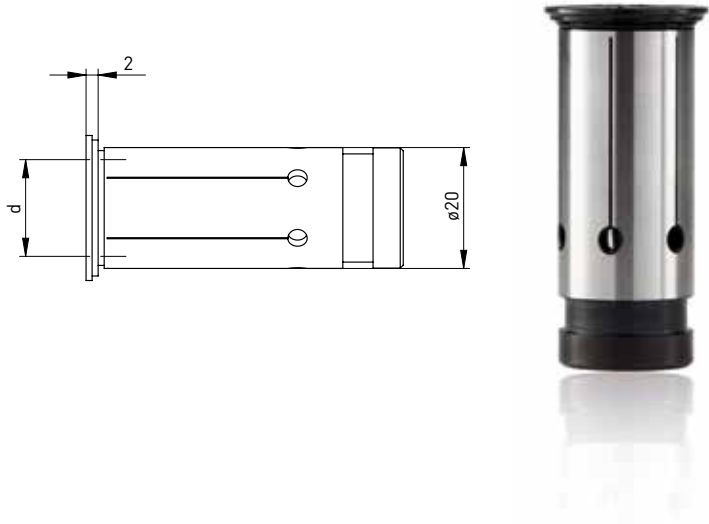


Delivery includes:
wrench

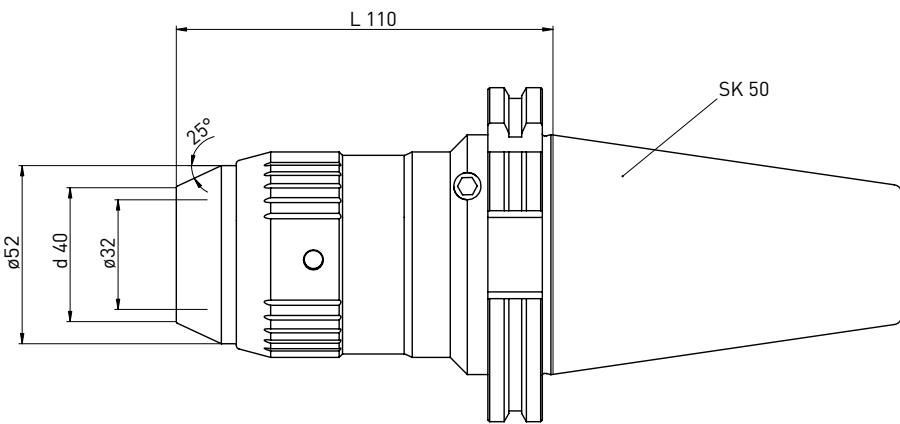
Item No.	Name	d	L
400005002	xGrind Hydro SK50 ø20	28	110

Accessories:

Item No.	Name	d
350110606	GDS intermediate sleeve ø20	3
350110607	GDS intermediate sleeve ø20	4
350110608	GDS intermediate sleeve ø20	5
350110609	GDS intermediate sleeve ø20	6
350110610	GDS intermediate sleeve ø20	7
350110611	GDS intermediate sleeve ø20	8
350110612	GDS intermediate sleeve ø20	9
350110613	GDS intermediate sleeve ø20	10
350110614	GDS intermediate sleeve ø20	11
350110615	GDS intermediate sleeve ø20	12
350110616	GDS intermediate sleeve ø20	13
350110617	GDS intermediate sleeve ø20	14
350110618	GDS intermediate sleeve ø20	15
350110619	GDS intermediate sleeve ø20	16



xGrind Hydro SK50 ø32

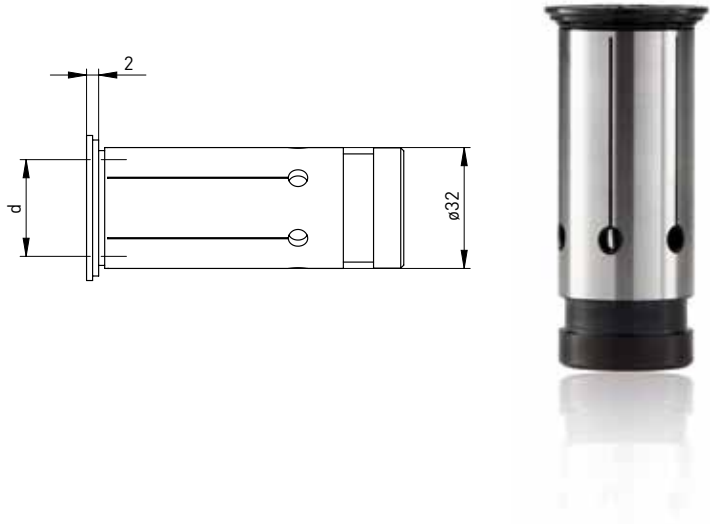


Delivery includes:
wrench

Item No.	Name	d	L
400005003	xGrind Hydro SK50 ø32	40	110

Accessories:

Item No.	Name	d
350110707	GDS intermediate sleeve ø32	6
350110708	GDS intermediate sleeve ø32	8
350110709	GDS intermediate sleeve ø32	10
350110710	GDS intermediate sleeve ø32	12
350110711	GDS intermediate sleeve ø32	14
350110712	GDS intermediate sleeve ø32	16
350110713	GDS intermediate sleeve ø32	18
350110714	GDS intermediate sleeve ø32	20
350110715	GDS intermediate sleeve ø32	25



Clamp stick is our product line for **clamping tools with an internal bore**.



GDS clamp sticks are expanding mandrels with extremely tight concentricity and runout tolerances. These properties allow you to manufacture and resharpen tools with high precision.

Its fast and easy handling offers you enormous flexibility.

Best geometries, highest manufacturing precision, and consistent quality are the prominent features of the GDS clamp stick series.

GDS - precision is our passion



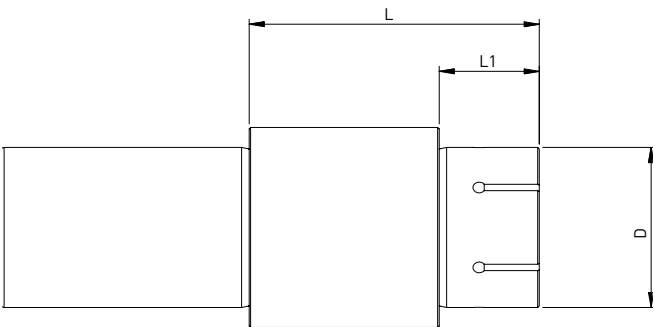
Slim profile for optimal grinding wheel clearance and selection flexibility.

Excellent concentricity and runout properties.

Various clamping diameters available.

Available with cylindrical shank, or with SK50 interface.

Clamp Stick **expanding mandrel with cylindrical shank**



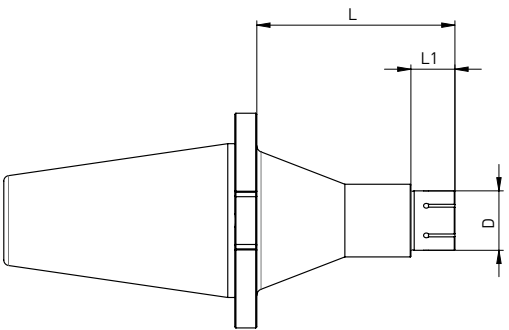
Shank tolerance: $\leq H7$
Concentricity: $\leq 5\mu$
Maximum expansion: 0,1

L: Overall length beyond the flange face // L1: Clamping length // D: Clamping diameter

Item No.	Name	L1	D
303001013	Mandrel $\varnothing 20 \times L53 \times \varnothing 13$	15	13
303001016	Mandrel $\varnothing 20 \times L53 \times \varnothing 16$	15	16
303001022	Mandrel $\varnothing 20 \times L56 \times \varnothing 22$	18	22
303001027	Mandrel $\varnothing 20 \times L58 \times \varnothing 27$	20	27
303001032	Mandrel $\varnothing 20 \times L62 \times \varnothing 32$	24	32
303001040	Mandrel $\varnothing 20 \times L64 \times \varnothing 40$	26	40

Item No.	Name	L1	D
303002013	Mandrel $\varnothing 32 \times L53 \times \varnothing 13$	15	13
303002016	Mandrel $\varnothing 32 \times L53 \times \varnothing 16$	15	16
303002022	Mandrel $\varnothing 32 \times L56 \times \varnothing 22$	18	22
303002027	Mandrel $\varnothing 32 \times L58 \times \varnothing 27$	20	27
303002032	Mandrel $\varnothing 32 \times L62 \times \varnothing 32$	24	32
303002040	Mandrel $\varnothing 32 \times L64 \times \varnothing 40$	26	40

Clamp Stick **expanding mandrel with SK50 taper**



Shank tolerance: $\leq H7$
Concentricity: $\leq 5\mu$
Maximum expansion: 0,1

L: Overall length beyond the flange face // L1: Clamping length // D: Clamping diameter

Item No.	Name	L2	D
303003016	Mandrel SK50 $\times L98 \times \varnothing 16$	15	16
303003022	Mandrel SK50 $\times L101 \times \varnothing 22$	18	22
303003027	Mandrel SK50 $\times L103 \times \varnothing 27$	20	27
303003032	Mandrel SK50 $\times L105 \times \varnothing 32$	24	32
303003040	Mandrel SK50 $\times L107 \times \varnothing 40$	26	40

FIRETIGER - interchangeable, universal robot pallets for Fanuc robot loaders and top loaders



The **FIRETIGER tool pallets** from GDS have been developed for standard tool automation with the FANUC robot loader. They allow the use of a fully automated and highly productive robot loader, which ensures a smooth automated and flexible production flow. Various 3-layer FIRETIGER tool pallets are available for workpiece diameters from 3 to 25 mm. If you need an individual solution, we will be happy to produce a 1-layer FIRETIGER individual tool pallet on request, tailored to your process.

FIRETIGER tool pallets 3-ply

Order No.	Name
350310011	FIRETIGER tool pallet, D = Ø 3 for tool diameter 3 mm, 3-ply
350310012	FIRETIGER tool pallet, D = Ø 4 for tool diameter 4 mm, 3-ply
350310013	FIRETIGER tool pallet, D = Ø 5 for tool diameter 5 mm, 3-ply
350310014	FIRETIGER tool pallet, D = Ø 6 for tool diameter 6 mm, 3-ply
350310015	FIRETIGER tool pallet, D = Ø 8 for tool diameter 8 mm, 3-ply
350310016	FIRETIGER tool pallet, D = Ø 10 for tool diameter 10 mm, 3-ply
350310017	FIRETIGER tool pallet, D = Ø 12 for tool diameter 12 mm, 3-ply
350310018	FIRETIGER tool pallet, D = Ø 16 for tool diameter 16 mm, 3-ply
350310019	FIRETIGER tool pallet, D = Ø 20 for tool diameter 20 mm, 3-ply
350310020	FIRETIGER tool pallet, D = Ø 25 for tool diameter 25 mm, 3-ply



Accessories for FIRETIGER tool pallets

Order No.	Name
350311001	Gripper finger, D = Ø 1-3 for tool diameter 1-3 mm 2 pieces necessary!
350311002	Gripper finger, D = Ø 3-7 for tool diameter 3-7 mm 2 pieces necessary!
350311003	Gripper finger, D = Ø 7-10 for tool diameter 7-10 mm 2 pieces necessary!
350311004	Gripper finger, D = Ø 10-13 for tool diameter 10-13 mm 2 pieces necessary!
350311005	Gripper finger, D = Ø 13-16 for tool diameter 13-16 mm 2 pieces necessary!
350311006	Gripper finger, D = Ø 16-19 for tool diameter 16-19 mm 2 pieces necessary!
350311007	Gripper finger, D = Ø 19-22 for tool diameter 19-22 mm 2 pieces necessary!
350311008	Gripper finger, D = Ø 22-25 for tool diameter 22-25 mm 2 pieces necessary!
350311009	Gripper finger, D = Ø 28-31 for tool diameter 28-31 mm 2 pieces necessary!
350311010	Gripper finger, D = Ø 31-33 for tool diameter 31-33 mm 2 pieces necessary!
350311011	Gripper finger, for production loader cylindrical for all tool diameters 2 pieces necessary!
350311012	Gripper finger fixed



FIRETIGER individual tool pallets 1-ply - the individual solution for you



*Individually configurable

Order No.	Name
350310001	FIRETIGER tool pallet, D = Ø 3 for tool diameter 3 mm, 1-ply
350310002	FIRETIGER tool pallet, D = Ø 4 for tool diameter 4 mm, 1-ply
350310003	FIRETIGER tool pallet, D = Ø 5 for tool diameter 5 mm, 1-ply
350310004	FIRETIGER tool pallet, D = Ø 6 for tool diameter 6 mm, 1-ply
350310005	FIRETIGER tool pallet, D = Ø 8 for tool diameter 8 mm, 1-ply
350310006	FIRETIGER tool pallet, D = Ø 10 for tool diameter 10 mm, 1-ply
350310007	FIRETIGER tool pallet, D = Ø 12 for tool diameter 12 mm, 1-ply
350310008	FIRETIGER tool pallet, D = Ø 16 for tool diameter 16 mm, 1-ply
350310009	FIRETIGER tool pallet, D = Ø 20 for tool diameter 20 mm, 1-ply
350310010	FIRETIGER tool pallet, D = Ø 25 for tool diameter 25 mm, 1-ply

Eliminate last obstacles in high precision production – work efficient and cost effective by using **balanced grinding wheel adapters**.



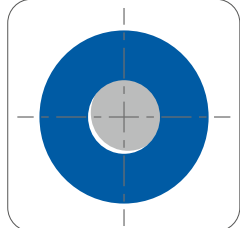
GDS' balancing system Equi'Z enables you to ensure consistent tool machining quality while preventing grinding wheel wear and machine repairs.

Protect your spindles and increase grinding wheel's service life with our perfectly harmonized balancing system. With a precise balanced grinding wheel, you work cost effective and preventive. You increase your units per wheel, improve your surface quality and avoid chatter marks. GDS' Equi'Z improves your grinding machine's mechanical stability and reduces stress at the spindle-bearing.

Our balancing system is available in different versions and perfectly adjusted to each application.

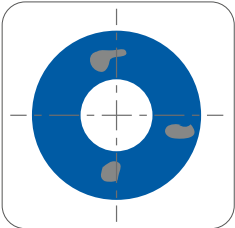
GDS - precision is our passion

Imbalance factors:
Tolerance of grinding wheel bore



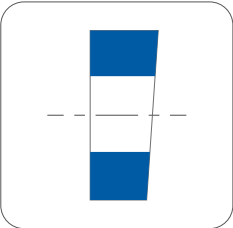
Consequences of imbalance:
Reduced surface quality (chatter marks).

Homogeneity of grinding wheel



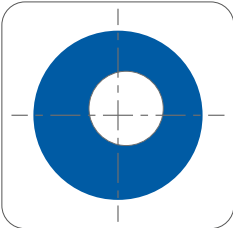
Reduced dimensional accuracy of workpiece (dressing costs increase).

Parallelism of the grinding wheel



High grinding wheel wear (short service life).

Concentricity of the grinding wheel



Headstock wear (unnecessary repairs and machine downtime).

Excellent balancing quality:
The Equi'Z balancing machines easily detect an imbalance of less than 0.1 g on all parts, whether their weight is 50 g or 8 kg.

Due to its light weight, the soft-bearing balancing machine is easy to move without special equipment.

Stand-alone device. No additional computer required.

Requires no PC or programming knowledge to operate.

Balances every tool or wheel set.

Prevent headstock and spindle-bearing repairs using the Equi'Z balancing system.

Wheel balancing increases wheel life and produces better surface finish and cutting edge on the tools you grind.

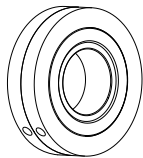


Equi'Z **balancing accessories for tool grinding machines**

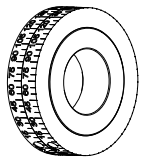
Order No.	Name
400006001	Equi'Z Competition to HSK63 or SK40 for Tablet // Notebook // PC
400006004	Equi'Z Competition Stand Alone 1 plane, to HSK63 / SK40 / PSC 5, BMT200-1.OP40
400006005	Equi'Z Competition Stand Alone 1+2 plane, to HSK63 / SK40 / PSC 5, BMT200-2.OP40

Order No.	Name
400006003	Equi'Z Ultimate to HSK100 or SK50 for Tablet // Notebook // PC
400006006	Equi'Z Ultimate Stand Alone 1 plane, to HSK125 / SK50 / PSC 8, BMT200-1.OP100
400006007	Equi'Z Ultimate Stand Alone 1+2 plane, to HSK125 / SK50 / PSC 8, BMT200-2.OP100

For balancing machine:

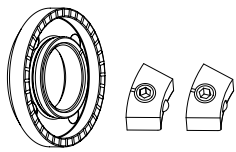


Order No.	Name
350080120	Balancing ring without scale 3-part 80gmm $\varnothing 60 \times \varnothing 20 \times 12$
350080130	Balancing ring without scale 3-part 80gmm $\varnothing 45 \times \varnothing 20 \times 12$



Order No.	Name
350080100	Balancing ring with scale 3-part 80gmm $\varnothing 60 \times \varnothing 20 \times 12$
350080110	Balancing ring with scale 3-part 80gmm $\varnothing 45 \times \varnothing 20 \times 12$

For grinding wheel adapters:



Order No.	Name
350020080	Clamping nut with balancing option $\varnothing 35 \times \varnothing 40 \times 8 \times M20 \times 1$ (without weights)
350020081	Balancing weight pair for clamping nut $\varnothing 35$ 40gmm
350040040	Clamping nut wrench PC29 for $\varnothing 20$

Order No.	Name
350020020	Clamping nut with balancing option $\varnothing 50 \times 8,5 \times M20 \times 1,0$ (without weights)
350020021	Balancing weight pair for clamping nut $\varnothing 50$ 100gmm
350040010	Clamping nut wrench PC 27 for $\varnothing 20$

Order No.	Name
350020026	Clamping nut with balancing option $\varnothing 47 \times 12 \times M31,5 \times 1,5$ (without weights)
350020027	Balancing weight pair for clamping nut $\varnothing 47$ 70gmm
350040030	Clamping nut wrench PC39 for $\varnothing 47$

Order No.	Name
350020022	Clamping nut with balancing option $\varnothing 60 \times 9 \times M32 \times 1,5$ (without weights)
350020023	Balancing weight pair for clamping nut $\varnothing 60$ 200gmm
350040030	Clamping nut wrench PC39 for $\varnothing 47$

Balancing machines for highest balancing accuracy ≤ 0.5 gmm

Operating options: Tablet, Notebook, PC (Windows 10)
or with integrated display (Stand Alone)



Accessories Competition and
Competition Stand Alone:

Item No.	Name
350080221	Equi'Z Adapter Perfect Arbor Standard // Competition
350080250	Equi'Z Adapter HSK63-A Standard // Competition
350080252	Equi'Z Adapter HSK63-F Standard // Competition
350080260	Equi'Z Adapter HSK50-A Standard // Competition
350080262	Equi'Z Adapter HSK50-F Standard // Competition
350080270	Equi'Z Adapter HSK40-A Standard // Competition
350080272	Equi'Z Adapter HSK40-F Standard // Competition
350080280	Equi'Z Adapter HSK32-F Standard // Competition
350080285	Equi'Z Adapter HSK25-A Standard // Competition
350080286	Equi'Z Adapter HSK32-A Standard // Competition
350080290	Equi'Z Adapter SK30-A Standard // Competition
350080300	Equi'Z Adapter SK40-A Standard // Competition
350080399	Equi'Z Adapter BT30/ANSI Standard // Competition
350080400	Equi'Z Adapter BT30/PT45 Standard // Competition
350080401	Equi'Z Adapter BT30/PT60 Standard // Competition
350080402	Equi'Z Adapter BT40/PT15 Standard // Competition
350080403	Equi'Z Adapter BT40/PT30 Standard // Competition
350080404	Equi'Z Adapter BT40/PT45 Standard // Competition
350080405	Equi'Z Adapter BT40/PT60 Standard // Competition
350080406	Equi'Z Adapter BT40/PT75 Standard // Competition
350080407	Equi'Z Adapter BT40/PT90 Standard // Competition

Accessories Ultimate and Ultimate
Stand Alone:

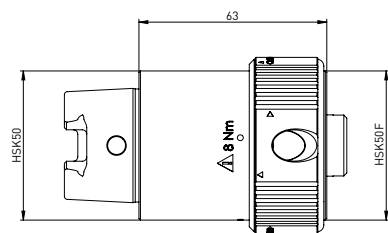
Item No.	Name
350080222	Equi'Z Adapter Perfect Arbor Power // Ultimate
350080251	Equi'Z Adapter HSK63-A Power // Ultimate
350080255	Equi'Z Adapter HSK80-A Power // Ultimate
350080256	Equi'Z Adapter HSK100-A Power // Ultimate
350080263	Equi'Z Adapter HSK50-A Power // Ultimate
350080271	Equi'Z Adapter HSK40-A Power // Ultimate
350080287	Equi'Z Adapter HSK32-A Power // Ultimate
350080310	Equi'Z Adapter SK50-A Power // Ultimate
350080311	Equi'Z Adapter SK40-A Power // Ultimate
350080312	Equi'Z Adapter SK30-A Power // Ultimate
350080410	Equi'Z Adapter BT30/PT30 Power // Ultimate
350080411	Equi'Z Adapter BT30/PT45 Power // Ultimate
350080413	Equi'Z Adapter BT40/PT30 Power // Ultimate
350080414	Equi'Z Adapter BT40/PT45 Power // Ultimate
350080415	Equi'Z Adapter BT40/PT90 Power // Ultimate
350080416	Equi'Z Adapter BT50/PT30 Power // Ultimate
350080417	Equi'Z Adapter BT50/PT45 Power // Ultimate
350080418	Equi'Z Adapter BT50/PT90 Power // Ultimate

Accessories Competition and Ultimate:

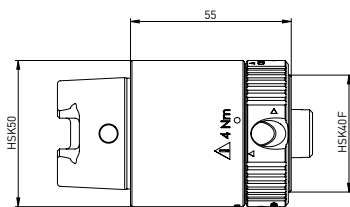
Item No.	Name
400006075	Equi'Z tablet stand
400006076	Equi'Z tablet tray

Adapters for dressing, presetting etc.

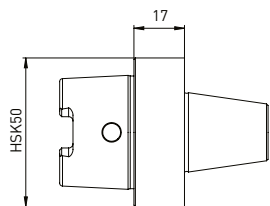
Adapter piece for **tool grinding machines, dressing machines, presetting devices, balancing machines**



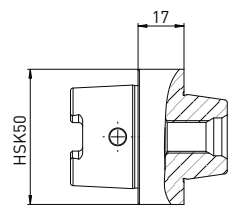
Order No.	Name
350130020	Adapter piece HSK50 on HSK40 A/C/E HSK50 B/D/F



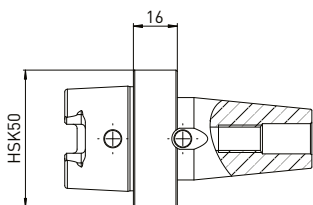
Order No.	Name
350130021	Adapter piece HSK50 on HSK32 A/C/E HSK40 B/D/F



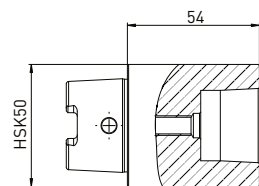
Order No.	Name
350130034	Adapter piece HSK50 on ANCA taper ø30



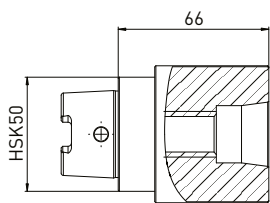
Order No.	Name
350130032	Adapter piece HSK50 on Haas/Walter taper



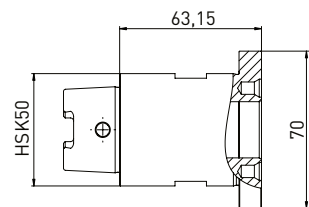
Order No.	Name
350130030	Adapter piece HSK50 on Strausak Fleximat



Order No.	Name
350130031	Adapter piece HSK50 on Strausak Promat



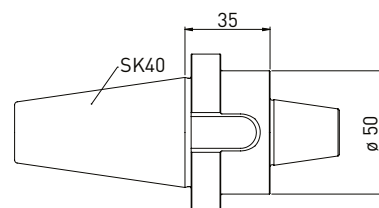
Order No.	Name
350130033	Adapter piece HSK50 on Saacke short taper



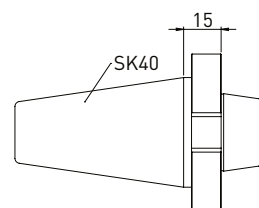
Order No.	Name
350130048	Adapter HSK50 x ø25 on Rollomatic

Adapter for dressing, presetting, balancing

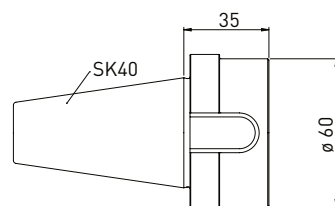
Adapters fine balanced SK40 an SK50 for **tool grinding machines, dressing machines, presetting devices, balancing machines**



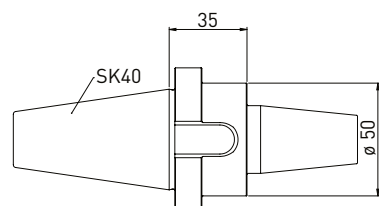
Order No.	Name
350130035	Adapter SK40 on ANCA taper ø30



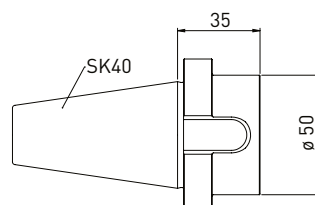
Order No.	Name
350130014	Adapter SK40 on Haas/Walter taper



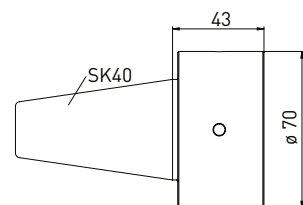
Order No.	Name
350130040	Adapter SK40 on Saacke short taper



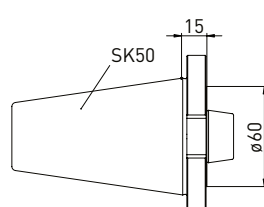
Order No.	Name
350130043	Adapter SK40 on Strausak Fleximat



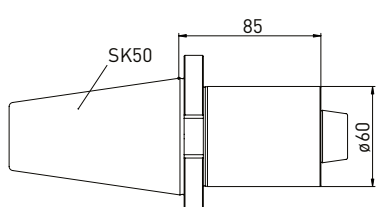
Order No.	Name
350130042	Adapter SK40 on Strausak Promat



Order No.	Name
350130039	Adapter SK40 on Rollomatic ø25

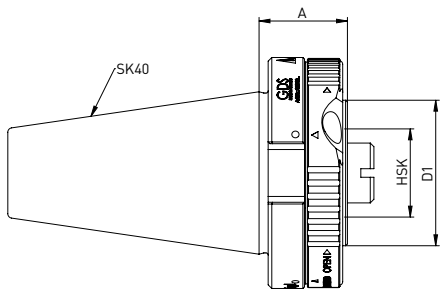


Order No.	Name
350130044	Adapter SK50 on Haas/Walter taper L15



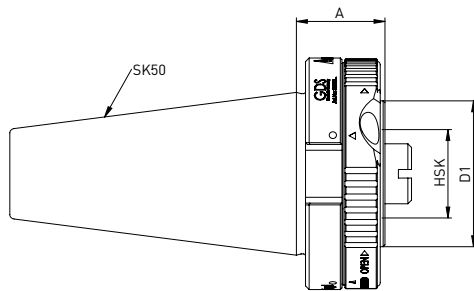
Order No.	Name
350130045	Adapter SK50 on Haas/Walter taper L85

Adapter SK40 on HSK



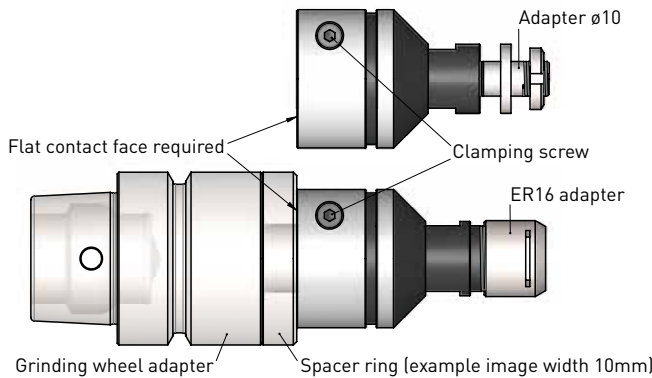
Order No.	A/C/E HSK shape	B/D/F HSK shape	A	D1
350130011	HSK32	HSK40	25	40
350130012	HSK40	HSK50	35	50
350130013	HSK50	HSK63	45	63

Adapter SK50 on HSK



Order No.	A/C/E HSK shape	B/D/F HSK shape	A	D1
350130001	HSK32	HSK40	30	40
350130002	HSK40	HSK50	33	50
350130003	HSK50	HSK63	45	63

Adapters for grinding wheel adapters from ø20 to ø10 // and ø20 to ER16 collet chuck



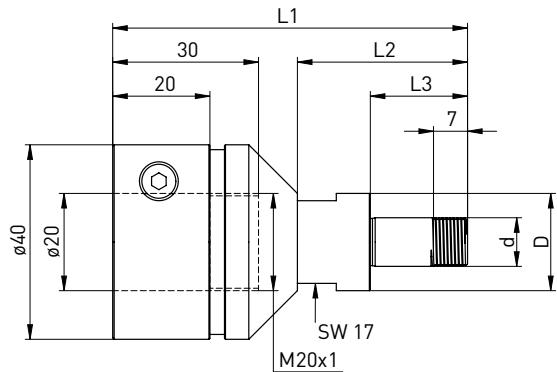
Assembly example

Twist adapter onto M20x1 screw and bring to rear to flat contact face.

If needed, lay spacers down first so that the adapter meets the flat contact face.

Subsequently, tighten using spanner flat and secure with clamping screw.

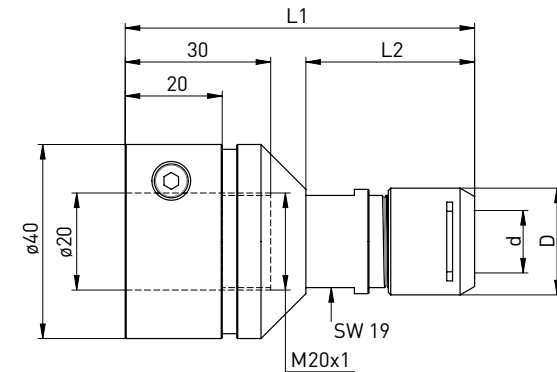
Adapter ø20 on ø10



Delivered equipped:
Clamping nut (350020114), Spacer rings 4pc. (350016004)

Order No.	D	d	L1	L2	L3
350130046	20	10	73	35	20

Adapter ø20 on ER16



Delivered equipped:
Mini clamping nut Silent ER16 (350020116)

Order No.	D	d	L1	L2
350130047	22	ER16	76	39

Accessories Adapter ø20 on ø10

Order No.	Name -ø
350016004	Spacer ring ø20 x ø10 x 3
350020114	clamping nut ø18 x 4 - M10 x 0,75
350040050	Hook wrench 16-20 mm

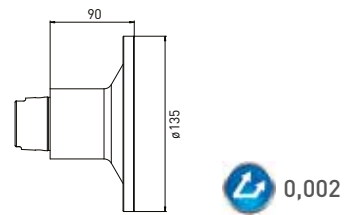
Accessories Adapter ø20 on ER16

Order No.	Name
350125116	Mini clamping nut SILENT ER16
350126116	Clamping wrench for Mini clamping nut SILENT ER16

Order No.	Name
3501217**	Collet DIN 6499 ER16 **ø1-10mm

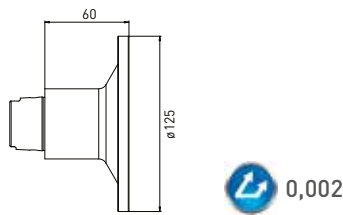
**(Please complete the order number with the two-digit number that defines the diameter!) e.g. for ø1 -> last digit 01 (350121701) for ø10 last digit ->10 (350121710)

HSK50 Test and angle dial



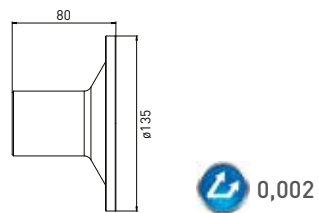
Order No.	Name
350090010	Test and angle dial HSK50

HSK40 Test and angle dial



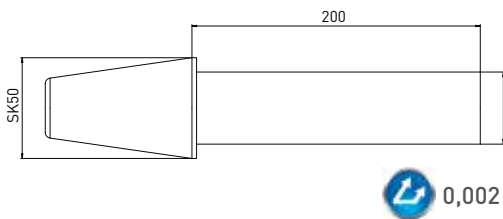
Order No.	Name
350090020	Test and angle dial HSK40

Test and angle dial



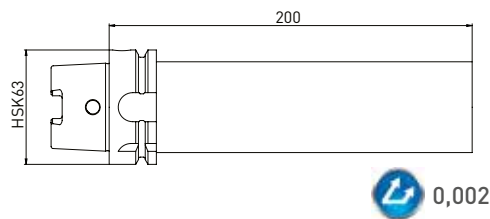
Order No.	Name
350090030	Angle dial Haas/Walter taper 31.75

SK Test mandrel



Order No.	Name
350090040	Test mandrel SK50 x ø50 x 200

HSK Test mandrel



Order No.	Name
350090050	Test mandrel HSK63 x ø50 x 200



Universal swing prism



Item No.: 350250102

Our certified partners **take care of you**, where we can't be in person, providing optimal support and answers to your questions.



Local GDS partners offer the complete line of original GDS grinding wheel adaptors as well as clamping and balancing solutions for tool grinding.

From consulting to order processing, please contact your local GDS partners.

GDS - precision is our passion

D- PLZ 0 - 6
Dr. MÜLLER DIAMANTMETALL AG
 Leprosenweg 34
 82362 Weilheim i. Ob.
 Tel: +49 (0) 881 - 90 11 55-0
 Fax: +49 (0) 881 - 90 11 55-100
 Email: vertrieb@muedia.de
 Web: www.muedia.de

D- PLZ 0 - 6 (Clamping and balancing technology)
Balletshofer Schleiftechnik
 Am Geiselbach 28
 86637 Zusamaltheim
 Mobil: +49 (0) 1 70 - 3 44 54 74
 Fax: +49 (0) 82 96 - 90 98 96
 Email: info@balletshofer.com
 Web: www.balletshofer.com

D- PLZ 6 + 7
Fischer Präzisionswerkzeug-Maschinen GmbH & Co. KG
 Burghaldenstraße 2
 71065 Sindelfingen
 Tel: +49 (0) 70 31 - 81 10 - 25
 Fax: +49 (0) 70 31 - 81 10 - 27
 Email: info@hf-fischer.de
 Web: www.hf-fischer.de

D- PLZ 8 + 9
Balletshofer Schleiftechnik
 Am Geiselbach 28
 86637 Zusamaltheim
 Mobil: +49 (0) 1 70 - 3 44 54 74
 Fax: +49 (0) 82 96 - 90 98 96
 Email: info@balletshofer.com
 Web: www.balletshofer.com



Of course, you can purchase our products from the trading partner of your choice.

AUSTRIA
plan:b4u GmbH
 Colmarplatz 1 / Top XXIII
 7000 Eisenstadt Austria
 Tel: +43 664 127 3039
 Email: info@planb4u.com
 Web: www.planb4u.com

BELARUSSIA
AWM Precision GmbH
 Genshagener Straße 27
 14974 Ludwigsfelde Germany
 Tel: +49 (0) 33 78 - 5 18 63 67
 Email: arnold@awm-precision.com
 Web: www.awm-precision.com

BELGIUM
oelheld technologies SAS
 innovative fluid technology
 Technopôle de Forbach-Sud
 140, Avenue Jean-Eric Bousch
 57600 Oeting France
 Tel: +33 (0) 387-90 42 14
 Fax: +33 (0) 387-84 66 91
 Email: martin.gundelach@oelheld.de
 Web: www.oelheld.com

CZECH/SLOVAKIA
Dr. MÜLLER DIAMANTMETALL AG
 Leprosenweg 34
 82362 Weilheim i. Ob. Germany
 Tel: +49 (0) 881 - 90 11 55-0
 Fax: +49 (0) 881 - 90 11 55-100
 Email: vertrieb@muedia.de
 Web: www.muedia.de

DENMARK
M-Tech ApS
 Holkebjergvej 75
 5250 Odense SV Denmark
 Tel: +45 3034 1415
 Email: m-tech@jakobsen.mail.dk

ESTONIA
AWM Precision GmbH
 Genshagener Straße 27
 14974 Ludwigsfelde Germany
 Tel: +49 (0) 33 78 - 5 18 63 67
 Email: arnold@awm-precision.com
 Web: www.awm-precision.com

FINLAND
Diamack Oy
 Asentajankatu 9 C
 48770 Kotka Finland
 Tel: +358 5 - 21 41 20
 Fax: +358 5 - 21 41 70
 Email: diamack@diamack.fi
 Web: www.diamack.fi

FRANCE
oelheld technologies SAS
 innovative fluid technology
 Technopôle de Forbach-Sud
 140, Avenue Jean-Eric Bousch
 57600 Oeting France
 Tel: +33 (0) 387-90 42 14
 Fax: +33 (0) 387-84 66 91
 Email: martin.gundelach@oelheld.de
 Web: www.oelheld.com

HUNGARY
Szerszám Technika Kft.
 Dűlő u. 4.
 1225 Budapest Hungary
 Tel: +36 1 287 82 76
 Fax: +36 1 287 82 77
 Email: info@szerszamtechnika.hu
 Web: www.szerszamtechnika.hu

IRELAND
oelheld technologies SAS
 innovative fluid technology
 Technopôle de Forbach-Sud
 140, Avenue Jean-Eric Bousch
 57600 Oeting France
 Tel: +33 (0) 387-90 42 14
 Fax: +33 (0) 387-84 66 91
 Email: martin.gundelach@oelheld.de
 Web: www.oelheld.com

ITALY
Utensileria FAVRIN Srl
 Via Per Cabiato 79
 22066 Mariano Comense Italy
 Tel: +39 (0) 31 - 74 72 00
 Fax: +39 (0) 31 - 75 12 22
 Email: utensileria-mariano@favrin.it
 Web: www.utensileria-favrin.it

LATVIA
AWM Precision GmbH
 Genshagener Straße 27
 14974 Ludwigsfelde Germany
 Tel: +49 (0) 33 78 - 5 18 63 67
 Email: arnold@awm-precision.com
 Web: www.awm-precision.com

LITHUANIA
AWM Precision GmbH
 Genshagener Straße 27
 14974 Ludwigsfelde Germany
 Tel: +49 (0) 33 78 - 5 18 63 67
 Email: arnold@awm-precision.com
 Web: www.awm-precision.com

LUXEMBOURG
oelheld technologies SAS
 innovative fluid technology
 Technopôle de Forbach-Sud
 140, Avenue Jean-Eric Bousch
 57600 Oeting France
 Tel: +33 (0) 387-90 42 14
 Fax: +33 (0) 387-84 66 91
 Email: martin.gundelach@oelheld.de
 Web: www.oelheld.com

NETHERLANDS
oelheld technologies SAS
 innovative fluid technology
 Technopôle de Forbach-Sud
 140, Avenue Jean-Eric Bousch
 57600 Oeting France
 Tel: +33 (0) 387-90 42 14
 Fax: +33 (0) 387-84 66 91
 Email: martin.gundelach@oelheld.de
 Web: www.oelheld.com

POLAND
Vollmer Polska sp z o.o.
 ul. Handlowa 11
 41-807 Zabrze Poland
 Tel: +48 32 733 08 69
 Email: info-pl@vollmer-group.com
 Web: www.vollmer-group.com

PORTUGAL // SPAIN
Procut
 Parque Industrial Cruzeiro
 Rua Nossa Senhora da Ajuda 150
 4815-364 Moreira de Conegos Portugal
 Tel: +351 253 56 12 11
 Fax: +351 253 56 39 49
 Email: info@procut.pt
 Web: www.procut.pt

SWEDEN // NORWAY
Ehn & Land AB
 Bultvågen 4
 553 02 Jönköping Sweden
 Tel: +46 86 35 34-50
 Fax: +46 86 35 34-70
 Email: info@ehnländ.se
 Web: www.ehnländ.se

SWITZERLAND
Ziegler + Cie AG
 Industriestraße 12
 8404 Winterthur Switzerland
 Tel: +41 (0) 52 234 20 20
 Fax: +41 (0) 52 234 20 10
 Email: info@zieglerag.ch
 Web: www.zieglerag.ch

UNITED KINGDOM
oelheld UK Ltd
 Unit 16, Colomendy Business Park,
 Erw Las, Denbigh LL16 5TA, UK
 Tel: +44 (0) 1745 814 777
 Fax: +44 (0) 1745 813 222
 Email: sales@oelheld.co.uk
 Web: www.oelheld.co.uk

UKRAINE
AWM Precision GmbH
 Genshagener Straße 27
 14974 Ludwigsfelde Germany
 Tel: +49 (0) 33 78 - 5 18 63 67
 Email: arnold@awm-precision.com
 Web: www.awm-precision.com



CHINA
HERZOG CHINA CO.,LTD.
4/F, No.3232 Beimen Road,
Kunshan, Jiangsu 215316, China
Tel: +86-512-55 19 05 78
Fax: +86-512-55 19 05 76
Email: dezhu@herzog-china.com
Web: www.herzog-china.com

Changzhou Technology Service Center
West Street 255#, Xixiashu Town,
Xinbei District, Changzhou City,
Jiangsu Province, China
Tel: +86-519-83 85 09 55
Email: dezhu@herzog-china.com

South China Technology Service Center
FuYuan Business Center 206#, 1# 13th Alley,
MaiYuan Road, XinAn Community, ChangAn Town,
DongGuan City, GuangDong Province, China
Tel: +86-769-81 88 99 62
Email: dezhu@herzog-china.com

INDIA
TMS PRECISION TECH PVT. LTD
B2-302, Regency Cosmos
Baner Road, Pune: 411045 India
Tel: +91 904 999 0855
Email: mayur.shinde@tmsprecisiontech.com
Web: www.tmsprecisiontech.com

IRAN
plan:b4u GmbH
Colmarplatz 1 / Top XXIII
7000 Eisenstadt Austria
Tel: +43 664 127 3039
Email: info@planb4u.com
Web: www.planb4u.com

IRAQ
plan:b4u GmbH
Colmarplatz 1 / Top XXIII
7000 Eisenstadt Austria
Tel: +43 664 127 3039
Email: info@planb4u.com
Web: www.planb4u.com

ISRAEL
De-Paz Machinery
- CNC machines & Accessories
Menachem Begin 80 Blvd
Afula. 1871356 Israel
Tel: +972-54-421 48 72
Email: zion@de-paz.com
Web: www.de-paz.com

JAPAN
Vollmer Japan Corp.
Haraichi 283-1
362-0021, Ageo-Shi
Saitama-Ken Japan
Tel: +81-48 795 4110
Fax: +81-48 795 4112
Email: INFO-JAPAN@VOLLMER-GROUP.COM

KAZAKHSTAN
AWM Precision GmbH
Genshagener Straße 27
14974 Ludwigsfelde Germany
Tel: +49 [0] 33 78 - 5 18 63 67
Email: arnold@awm-precision.com
Web: www.awm-precision.com

KOREA
Central Technology Co. Ltd
D-1311, Gwangmyeong Techno Park, Haanro 60,
Gwangmyeong-Si, Gyeonggi-Do, 423-050 Korea
Tel: +82-2-897-0945
Fax: +82-2-897-0943
Email: ycr@centraltech.co.kr
Web: www.centraltech.co.kr

KUWAIT
plan:b4u GmbH
Colmarplatz 1 / Top XXIII
7000 Eisenstadt Austria
Tel: +43 664 127 3039
Email: info@planb4u.com
Web: www.planb4u.com

OMAN
plan:b4u GmbH
Colmarplatz 1 / Top XXIII
7000 Eisenstadt Austria
Tel: +43 664 127 3039
Email: info@planb4u.com
Web: www.planb4u.com

PACIFIC
(Indonesia, Malaysia, Singapore)
VOLLMER Asia Pacific Co., Ltd.
20th Floor, SJ Infinite One Business Complex
Unit 2001-2005
349 Vibhavadi-Rangsit Road, Chompol
Chatuchak, Bangkok, 10900 Thailand

QATAR
plan:b4u GmbH
Colmarplatz 1 / Top XXIII
7000 Eisenstadt Austria
Tel: +43 664 127 3039
Email: info@planb4u.com
Web: www.planb4u.com

RUSSIA
AWM Precision GmbH
Genshagener Straße 27
14974 Ludwigsfelde Germany
Tel: +49 [0] 33 78 - 5 18 63 67
Email: arnold@awm-precision.com
Web: www.awm-precision.com

SAUDI ARABIA
plan:b4u GmbH
Colmarplatz 1 / Top XXIII
7000 Eisenstadt Austria
Tel: +43 664 127 3039
Email: info@planb4u.com
Web: www.planb4u.com

TAIWAN
HERZOG Taiwan Co., Ltd.
10F, No.70 Gongyequ 1st Rd., Situn Dist.
Taichung City 40766, Taiwan (R.O.C.)
Tel: +886-4-23 55-33 88
Fax: +886-4-23 55-22 99
Email: afly@costa.com.tw
Web: www.costa.com.tw

THAILAND
VOLLMER Asia Pacific Co., Ltd.
20th Floor, SJ Infinite One Business Complex
Unit 2001-2005
349 Vibhavadi-Rangsit Road, Chompol
Chatuchak, Bangkok, 10900 Thailand

TURKEY
Mikron Otomasyon ve CNC Teknolojileri
Yeni mahalle Yalı sokak
Panorama Life Sitesi Nu:1
34882 Yakacık Kartal Istanbul
Tel: +90 216 671 03 24
Email: info@mikronotomasyon.com
Web : www.mikronotomasyon.com

UNITED ARAB EMIRATES
plan:b4u GmbH
Colmarplatz 1 / Top XXIII
7000 Eisenstadt Austria
Tel: +43 664 127 3039
Email: info@planb4u.com
Web: www.planb4u.com

VIETNAM
Central Technology Co. Ltd
D-1311, Gwangmyeong Techno Park, Haanro 60,
Gwangmyeong-Si, Gyeonggi-Do, 423-050
Korea
Tel: +82-2-897-0945
Fax: +82-2-897-0943
Email: ycr@centraltech.co.kr
Web: www.centraltech.co.kr



ALGERIA
oelheld technologies SAS
innovative fluid technology
Technopôle de Forbach-Sud
140, Avenue Jean-Eric Bousch
57600 Oeting France
Tel: +33 [0] 387-90 42 14
Fax: +33 [0] 387-84 66 91
Email: martin.gundelach@oelheld.de
Web: www.oelheld.com

AUSTRALIA
Camco Cutting Tools Int'l Pty. Ltd.
1/25 Mareno Rd., P.O. Box 1575,
Tullamarine, Victoria, 3043 Australia
Tel: +61 [0]3 8336 1500
Fax: +61 [0]3 8336 1499
Mob: +61 [0]413 126 868
Email: sales@camcointl.com

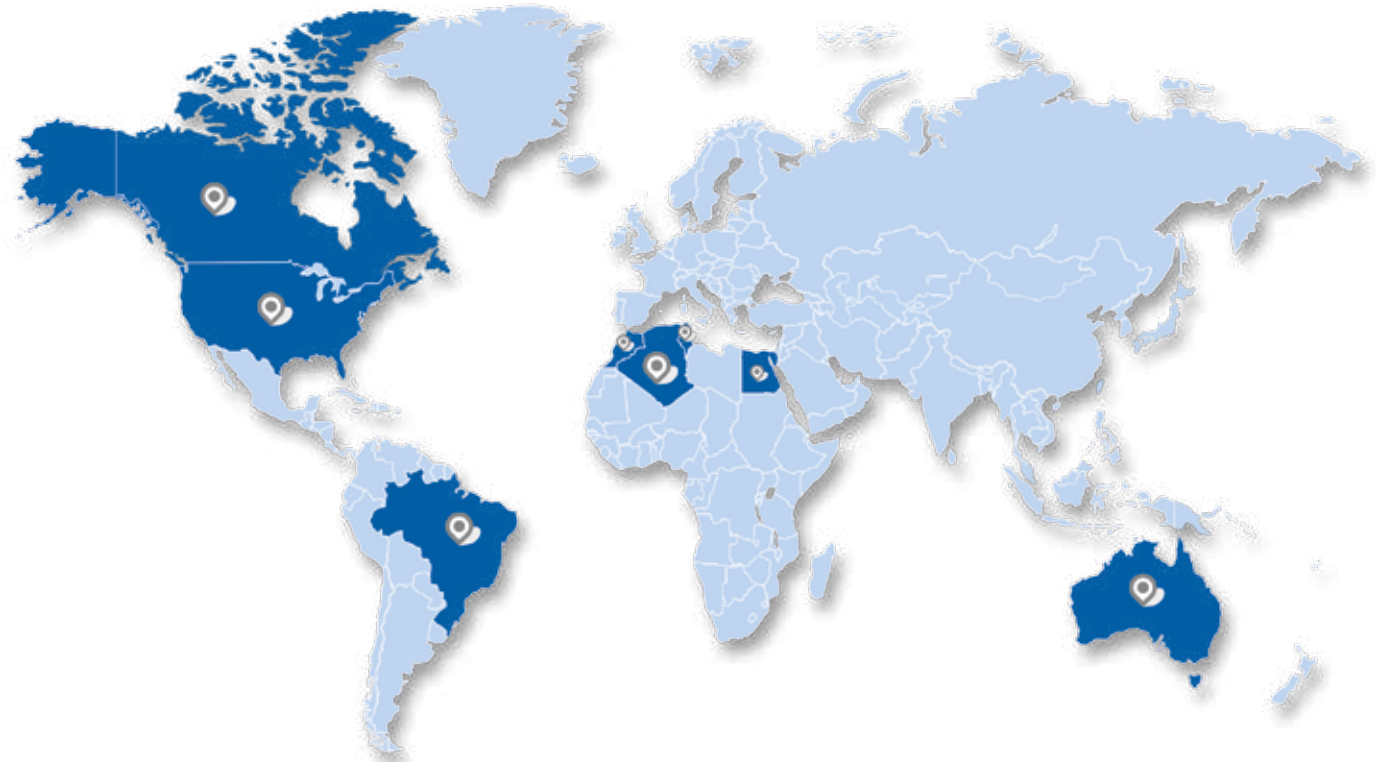
BRAZIL
Metalsystem
Rua João Pereira Chaves, 440
RS 93032-320 Jardim America, São Leopoldo Brazil
Tel: +55 51 8159-8455
Email: Vendas@metalsystem.ind.br
Email: renato@metalsystem.ind.br
Web: www.metalsystem.ind.br

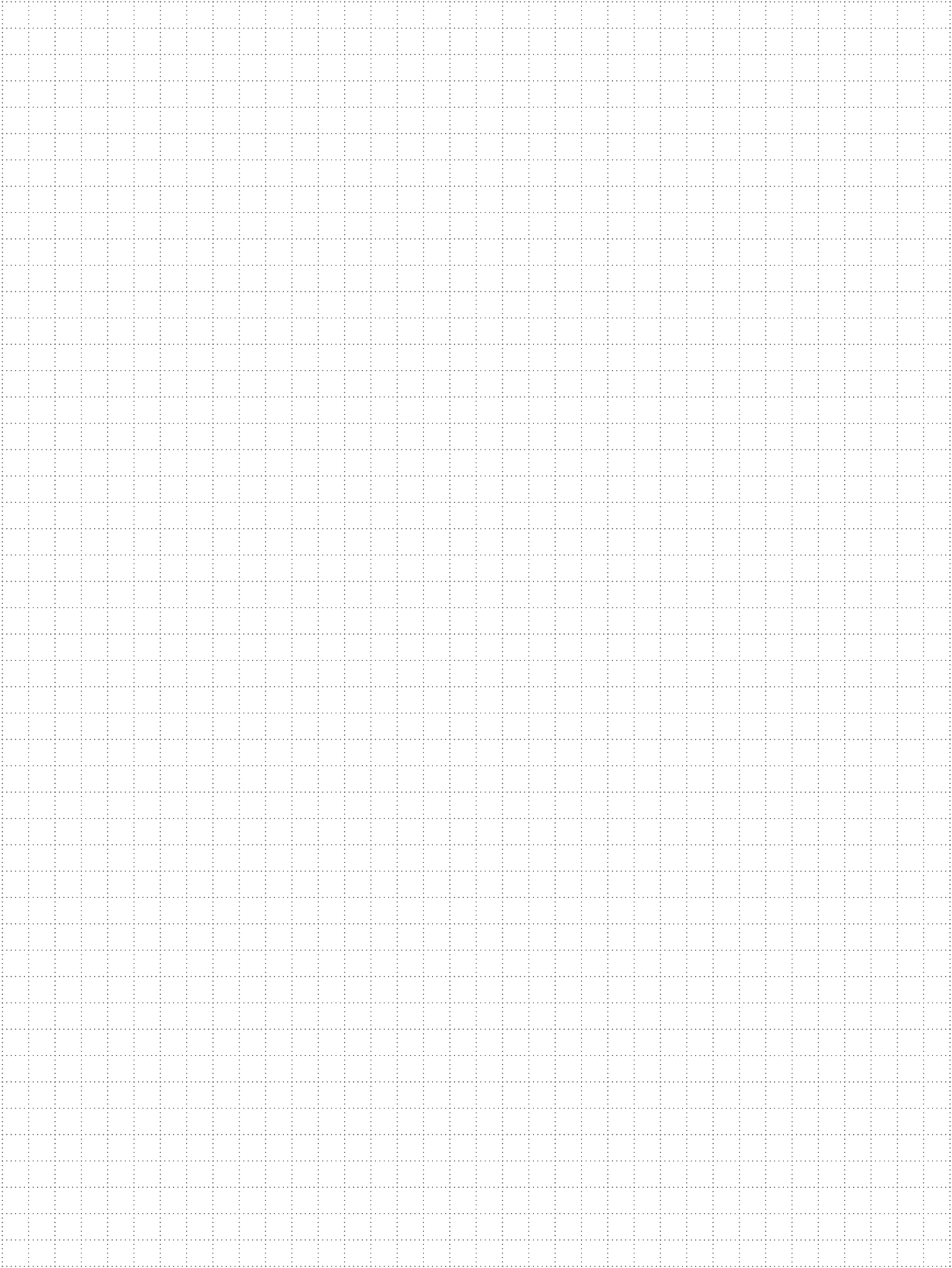
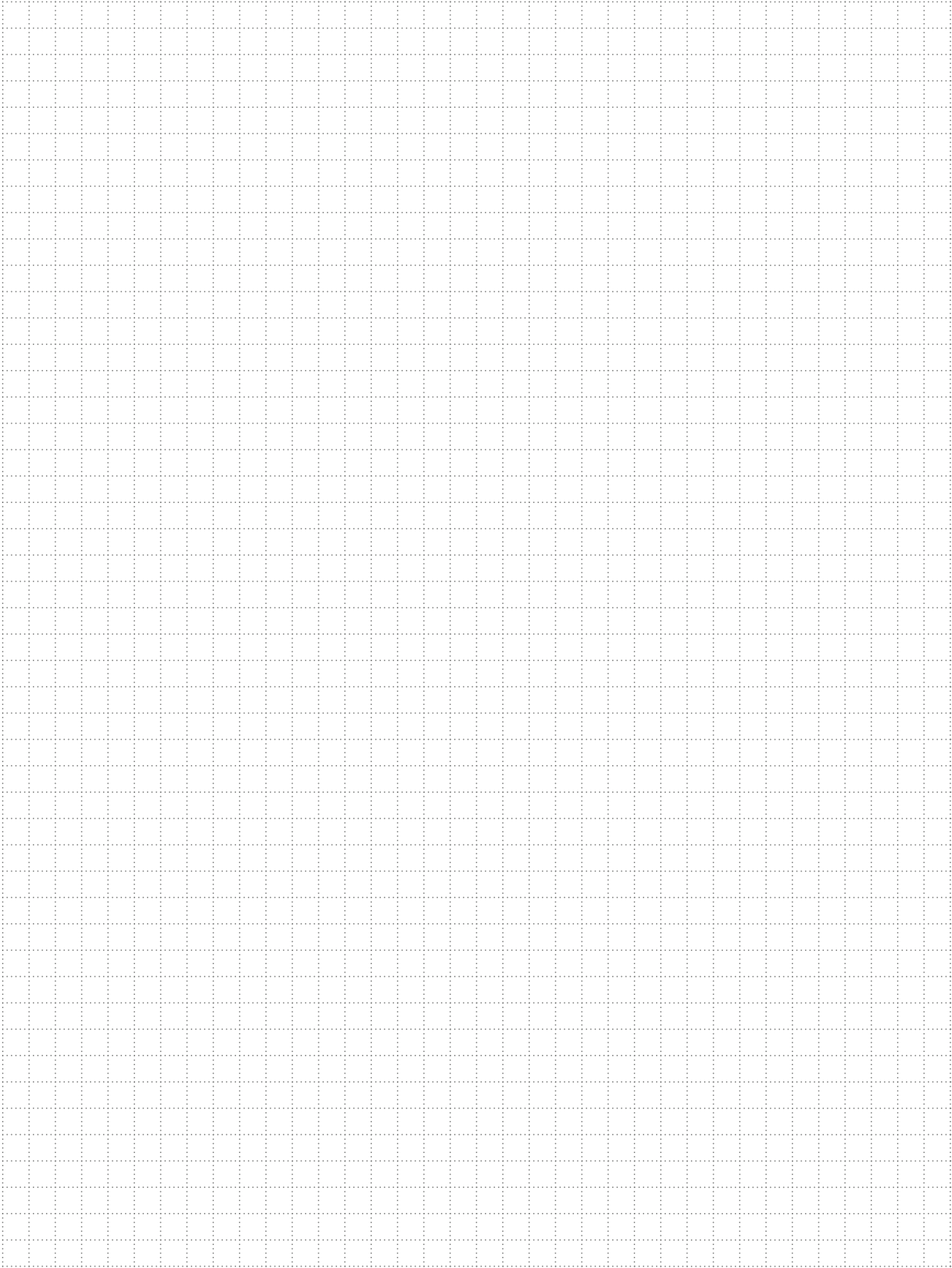
CANADA
Toolroom Solutions Inc.
Ed Sinkora
8824 Old Block House Ln
22551 Spotsylvania USA
Tel: +1 540 9 40 - 59 77
Email: ed@toolroom.solutions

MOROCCO
oelheld technologies SAS
innovative fluid technology
Technopôle de Forbach-Sud
140, Avenue Jean-Eric Bousch
57600 Oeting France
Tel: +33 [0] 387-90 42 14
Fax: +33 [0] 387-84 66 91
Email: martin.gundelach@oelheld.de
Web: www.oelheld.com

TUNISIA
oelheld technologies SAS
innovative fluid technology
Technopôle de Forbach-Sud
140, Avenue Jean-Eric Bousch
57600 Oeting France
Tel: +33 [0] 387-90 42 14
Fax: +33 [0] 387-84 66 91
Email: martin.gundelach@oelheld.de
Web: www.oelheld.com

USA
Toolroom Solutions Inc.
Ed Sinkora
8824 Old Block House Ln
22551 Spotsylvania USA
Tel: +1 540 9 40 - 59 77
Email: ed@toolroom.solutions





REVOLUTION IN TOOLGRINDING

